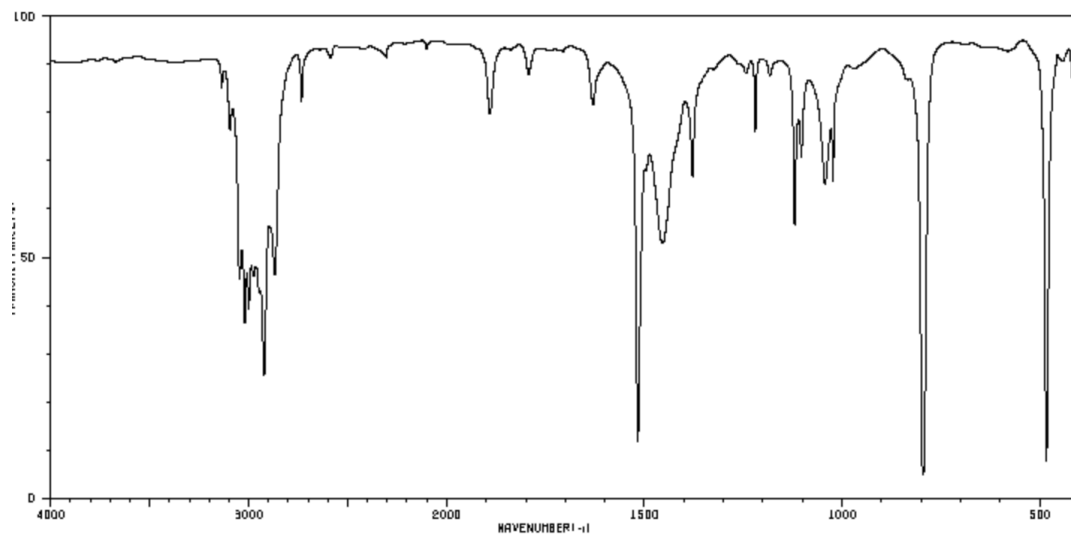
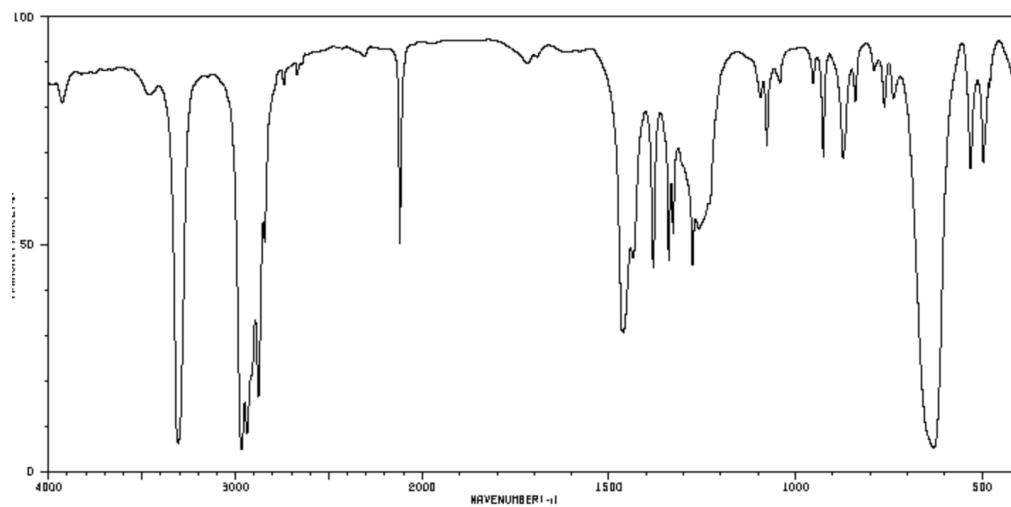
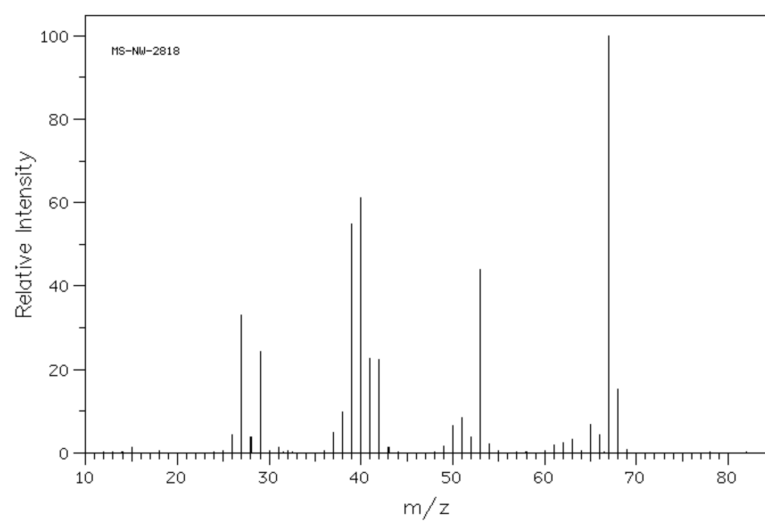
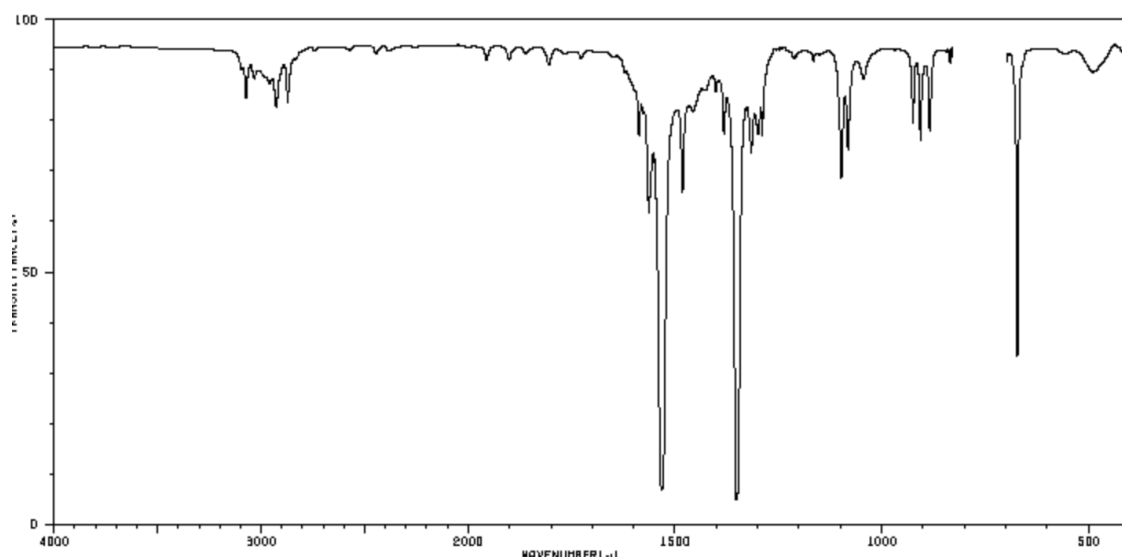
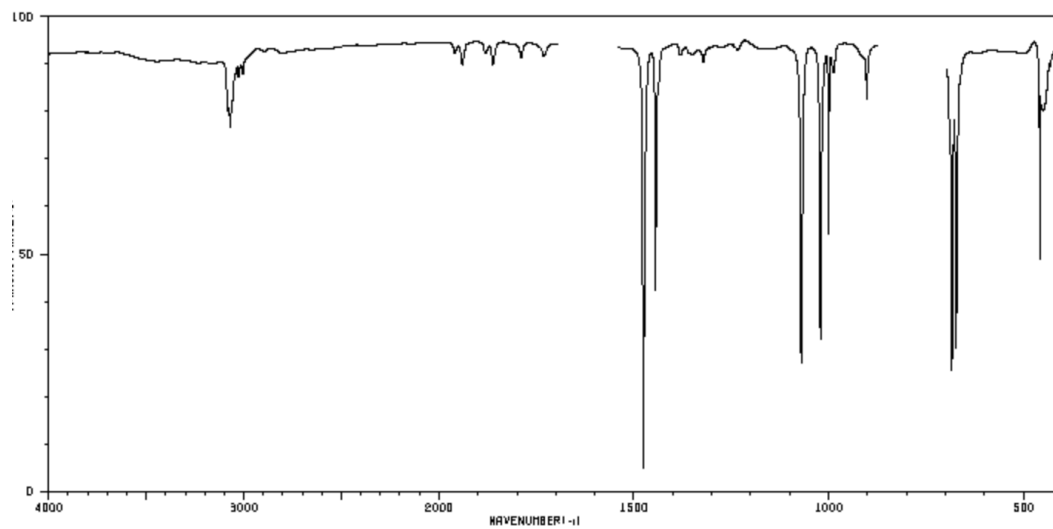
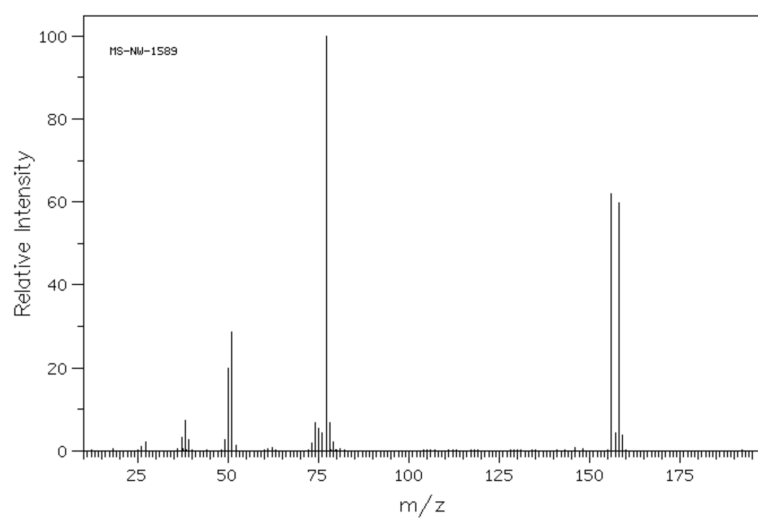
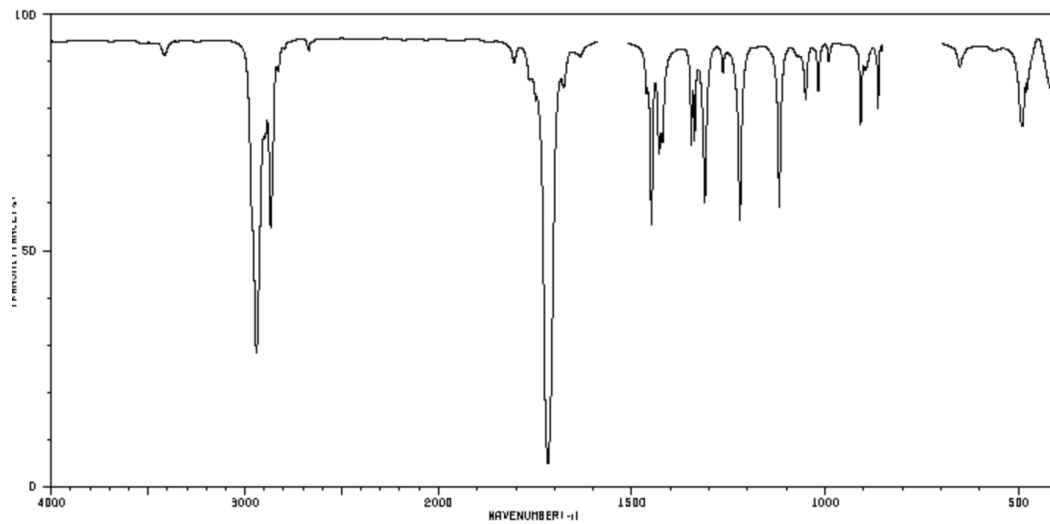


Example 1 (C₈H₁₀)

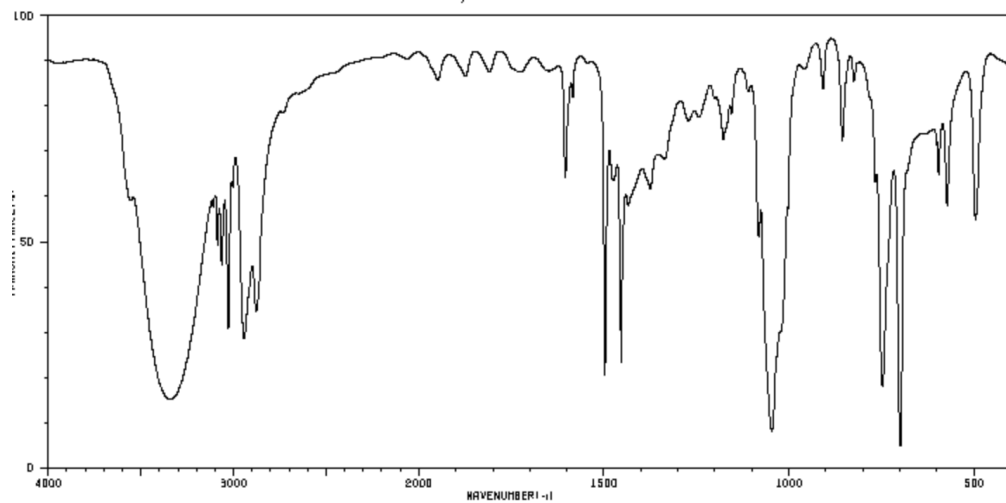
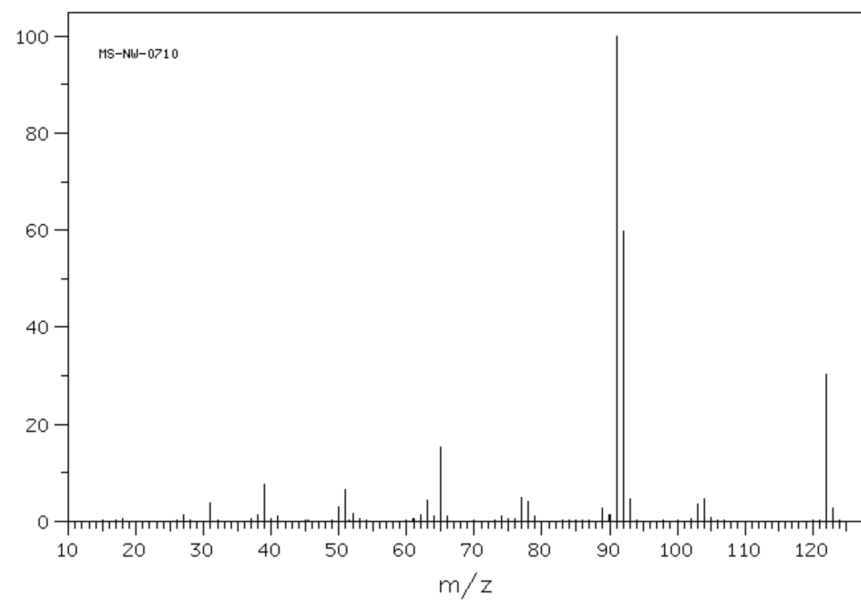
Example 2

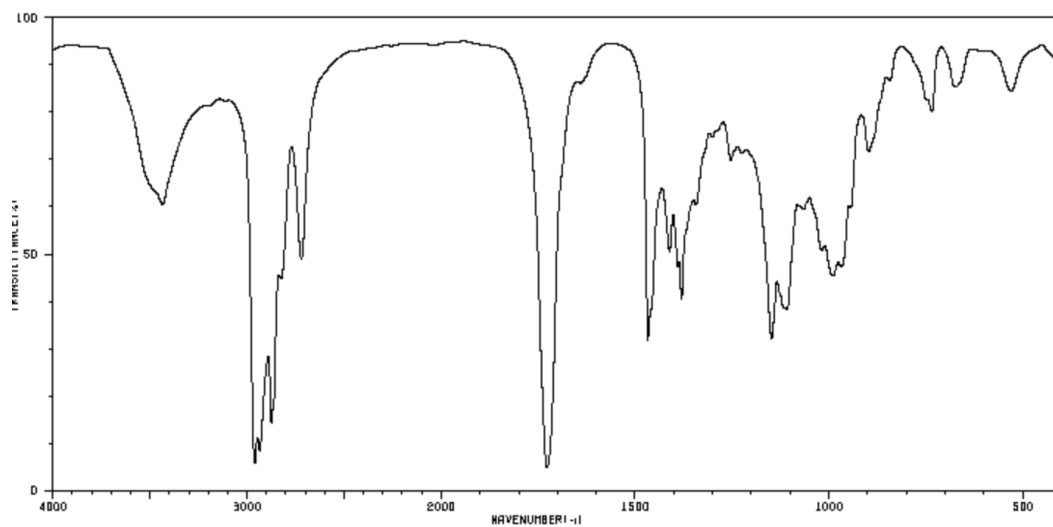


Example 3 ($C_7H_7NO_2$)Example 4 ($M^+ = 156$)

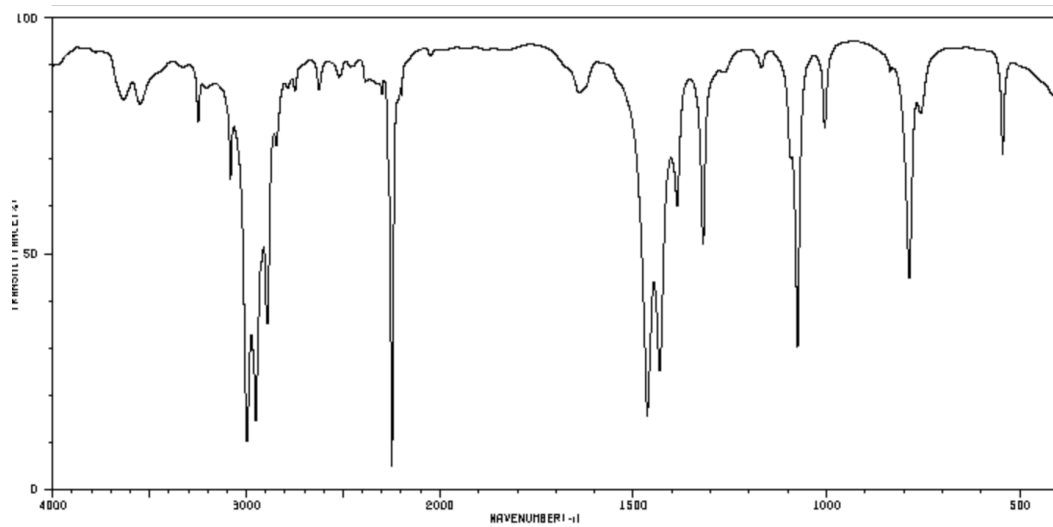
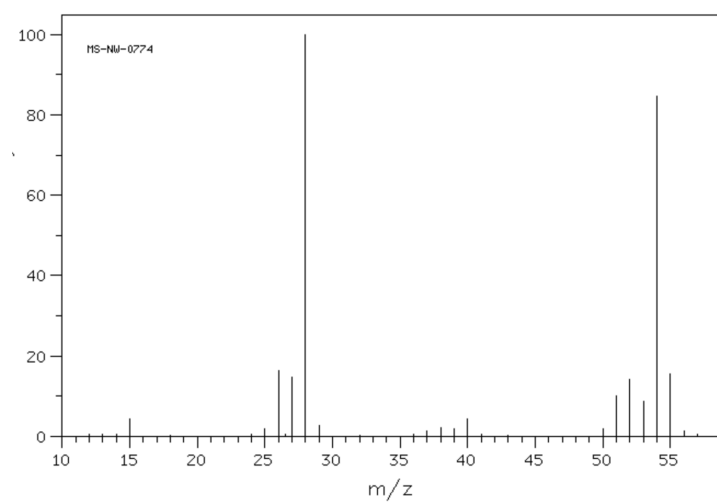
Example 5 ($C_6H_{10}O$)

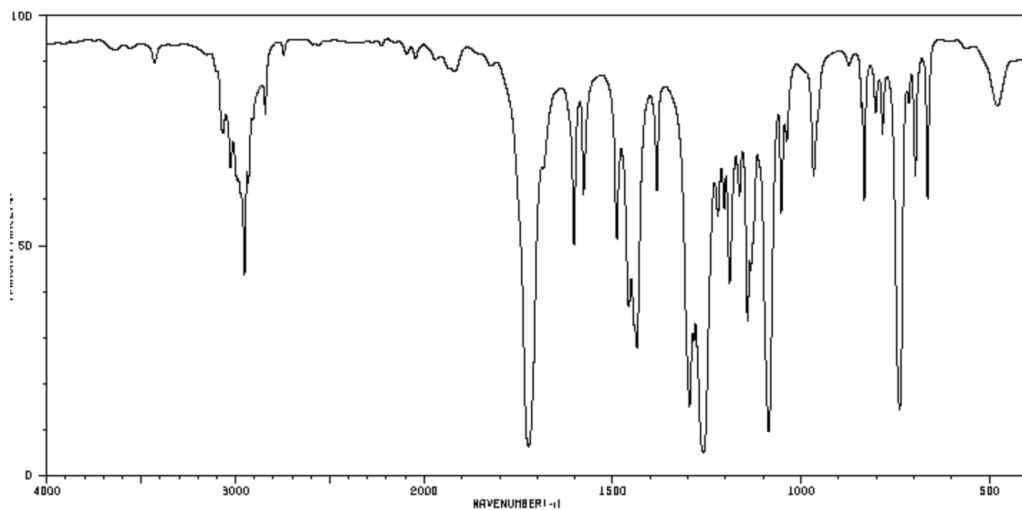
Example 6



Example 7 (C₅H₁₀O)

Example 8



Example 9 ($C_9H_{10}O_2$)

Example 10 – Peak at about 3500 cm^{-1} is from water and not the unknown.

