

## TOTAL ENROLLMENT SUMMARY

	Fall 2000	Fall 2001	Fall 2002	Fall 2003	Fall 2004
Headcount	12,101	12,548	13,743	13,945	13,921
Full-Time Equivalent	8,647	9,104	9,817	10,265	10,198
FTE/Headcount Ratio	0.715	0.726	0.714	0.736	0.733
Residency Status for Tuition					
In-State	9,190	9,447	10,169	10,045	9,923
Out-of-State With Waiver	983	1,018	1,036	945	860
Out-of-State No Waiver	1,928	2,083	2,529	2,955	3,138
Full-Time	8,040 66.4%	8,466 67.5%	9,050 65.9%	9,584 68.7%	9,478 68.1%
Part-Time	4,061 33.6%	4,082 32.5%	4,693 34.1%	4,361 31.3%	4,443 31.9%
Male	4,909 40.6%	5,120 40.8%	5,673 41.3%	5,876 42.1%	5,743 41.3%
Female	7,192 59.4%	7,428 59.2%	8,070 58.7%	8,069 57.9%	8,178 58.7%
White, Non-Hispanic Students	11,301	11,587	12,575	12,724	12,717
African American Students	448	550	659	653	652
Native American	34	37	29	33	36
Asian/Pacific Islander	119	120	151	146	145
Hispanic	57	84	107	122	135
International Students*	142	170	222	267	236

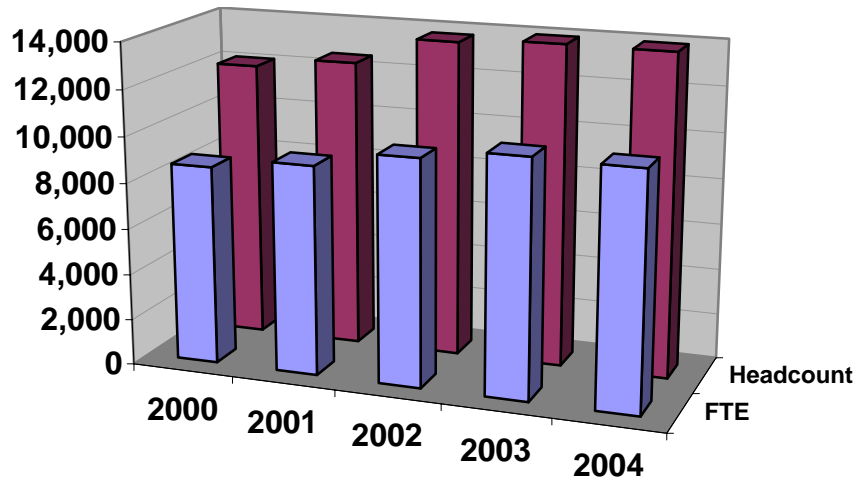
\*Non-resident alien on student visa.

SOURCE: Office of the Registrar.

# Total Enrollment Summary

## Headcount and FTE

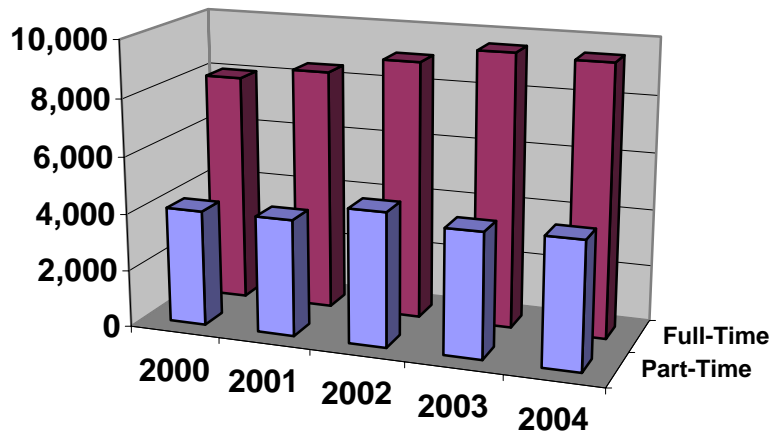
Fall Semester



Year	2000	2001	2002	2003	2004
Headcount	12,101	12,548	13,743	13,945	13,921
FTE	8,647	9,104	9,817	10,265	10,198

## Headcount of all Students

Full-Time and Part-Time



Year	2000	2001	2002	2003	2004
Full-Time	8,040	8,466	9,050	9,584	9,478
Part-Time	4,061	4,082	4,693	4,361	4,443
Total	12,101	12,548	13,743	13,945	13,921

**SUMMARY OF STUDENT POPULATION  
1968-2004**

Academic Year	<i>Fall Enrollment</i>				<i>Degrees Conferred</i>							* Total
	Under-graduate	Graduate	First Professional	Total Fall Enrollment	Certificate	Associate	Bachelor	Postbaccalaureate Certificate	Masters	Post Master's Certificate	Professional	
1968/69	1,368			1,368								
1969/70	1,483			1,483								
1970/71	1,328			1,328								
1971/72	3,065			3,065								
1972/73	3,596		503	4,099		177	346				65	588
1973/74	4,209		549	4,758		112	344				103	559
1974/75	4,297		591	4,888		125	381		7		119	632
1975/76	5,195	272	574	6,041		150	419		82		106	757
1976/77	5,535	290	582	6,407		212	423		78		128	841
1977/78	5,637	347	585	6,569		208	419		101		192	920
1978/79	5,899	388	516	6,803		248	449		118		138	953
1979/80	6,574	450	510	7,534		273	440		177		143	1,033
1980/81	7,249	623	500	8,372		260	508		159		129	1,056
1981/82	7,755	649	450	8,854		236	466		176		133	1,011
1982/83	8,276	648	434	9,358		258	518		179		113	1,068
1983/84	8,480	495	401	9,376		333	524		155		110	1,122
1984/85	8,036	460	383	8,879		313	585		128		97	1,123
1985/86	7,876	465	356	8,697		236	677		136		95	1,144
1986/87	7,847	465	349	8,661		211	644		122		102	1,079
1987/88	8,175	494	351	9,020		190	651		103		78	1,022
1988/89	8,592	521	384	9,497		200	655		90		87	1,032
1989/90	9,266	682	384	10,332		202	652		151		97	1,102
1990/91	10,201	650	409	11,260		237	771		163		115	1,286
1991/92	10,446	669	425	11,540		257	799		181		102	1,339
1992/93	10,827	651	410	11,888		232	934		168		125	1,459
1993/94	10,944	634	446	12,024		312	1,033		150		127	1,622
1994/95	10,844	711	423	11,978	2	289	1,028		173		117	1,609
1995/96	10,460	768	409	11,637	1	310	1,093		181		128	1,713
1996/97	10,269	794	410	11,473	1	240	1,082		212		106	1,641
1997/98	10,625	758	402	11,785	1	234	1,122		207		111	1,675
1998/99	10,643	764	392	11,799	1	221	1,163		211		112	1,708
1999/00	10,672	746	358	11,776	2	202	1,142		229		112	1,687
2000/01	10,859	871	371	12,101	0	222	1,186		196		81	1,685
2001/02	11,288	884	376	12,548	0	267	1,259		210		93	1,829
2002/03	12,164	1,107	472	13,743	1	287	1,374		292		101	2,055
2003/04	12,223	1,196	526	13,945	0	214	1,421	8	352	7	102	2,104
2004/05	12,070	1,272	579	13,921								

ite, Bachelors, Masters, First Professional.  
 nouncement was held in May of 1973.

Office of the Registrar.

## UNDERGRADUATE ENROLLMENT SUMMARY

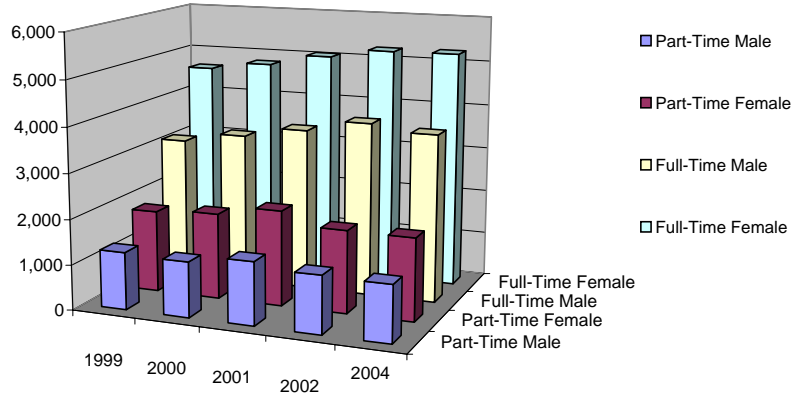
	[.....Degree-Seeking.....]					[.....Non-Degree*.....]				
	Fall 2000	Fall 2001	Fall 2002	Fall 2003	Fall 2004	Fall 2000	Fall 2001	Fall 2002	Fall 2003	Fall 2004
<i>Headcount</i>	10,318	10,745	11,567	11,666	11,661	541	543	597	557	409
Full-Time Equivalent (Ratio 16:1)	7,811	8,258	8,748	9,100	9,002	195	159	177	170	127
FTE/Headcount Ratio	0.757	0.769	0.756	0.780	0.772	0.360	0.293	0.296	0.305	0.311
<i>Residency Status for Tuition</i>										
In-State	7,867	8,118	8,649	8,513	8,416	442	451	489	450	319
Out-of-State With Waiver	805	826	828	806	778	2	2	1	0	0
Out-of-State No Waiver	1,646	1,801	2,090	2,347	2,467	97	90	107	107	90
Full-Time (12 hours or more)	7,673 74.4%	8,108 75.5%	8,607 74.4%	9,060 77.7%	8,952 76.8%	93 17.2%	50 9.2%	47 7.9%	55 9.9%	42 10.3%
Part-Time (less than 12 hours)	2,645 25.6%	2,637 24.5%	2,960 25.6%	2,606 22.3%	2,709 23.2%	448 82.8%	493 90.8%	550 92.1%	502 90.1%	367 89.7%
Male	4,185 40.6%	4,401 41.0%	4,759 41.1%	4,910 42.1%	4,812 41.3%	234 43.3%	191 35.2%	237 39.7%	225 40.4%	164 40.1%
Female	6,133 59.4%	6,344 59.0%	6,808 58.9%	6,756 57.9%	6,849 58.7%	307 56.7%	352 64.8%	360 60.3%	332 59.6%	245 59.9%
First-Time Student	1,788 17.3%	1,867 17.4%	1,977 17.1%	2,003 17.2%	1,952 16.7%	172 31.8%	136 25.0%	182 30.5%	158 28.4%	82 20.0%
<i>Race</i>										
White, Non-Hispanic Student:	9,645	9,927	10,599	10,656	10,647	494	487	534	510	380
African American Students	400	479	567	564	567	15	35	34	18	12
Native American	27	32	27	27	26	3	4	1	2	0
Asian/Pacific Islander	77	89	107	108	106	23	8	12	8	11
Hispanic	47	72	93	100	113	2	5	7	7	2
International Students **	122	146	174	211	202	4	4	9	12	4

\* Includes post baccalaureate, undergraduate non-degree, and high school students

\*\* Non Resident/Alien on Student Visa

SOURCE: Office of the Registrar and Office of Admissions

## Undergraduate Enrollment Headcount By Full and Part-Time Status & Gender

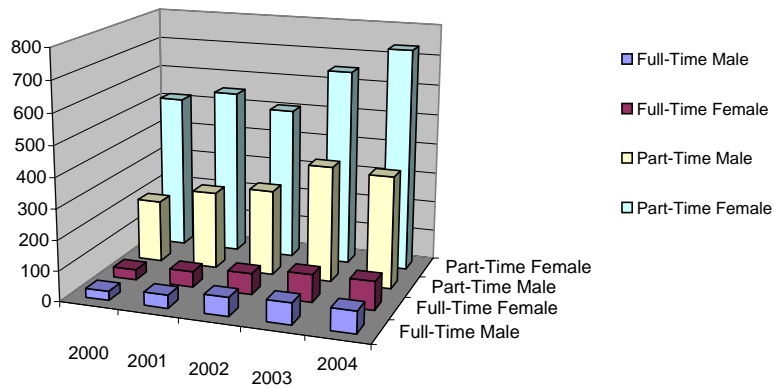


### Undergraduate Degree and Non-Degree

Full-Time	1999	2000	2001	2002	2004
<b>Male</b>	3,147	3,366	3,602	3,865	3,726
<b>Female</b>	4,619	4,792	5,052	5,250	5,268
<b>Total</b>	<b>7,766</b>	<b>8,158</b>	<b>8,654</b>	<b>9,115</b>	<b>8,994</b>

Part-Time	2000	2001	2002	2003	2004
<b>Male</b>	1,272	1,226	1,394	1,270	1,250
<b>Female</b>	1,821	1,904	2,116	1,838	1,826
<b>Total</b>	<b>3,093</b>	<b>3,130</b>	<b>3,510</b>	<b>3,108</b>	<b>3,076</b>

## GRADUATE ENROLLMENT HEADCOUNT By Full and Part-Time Status & Gender



### Graduate Students

Full-Time	2000	2001	2002	2003	2004
<b>Male</b>	30	43	62	71	72
<b>Female</b>	34	52	70	91	94
<b>Total</b>	<b>64</b>	<b>95</b>	<b>132</b>	<b>162</b>	<b>166</b>

Part-Time	2000	2001	2002	2003	2004
<b>Male</b>	207	257	283	383	370
<b>Female</b>	515	550	506	651	736
<b>Total</b>	<b>722</b>	<b>807</b>	<b>789</b>	<b>1,034</b>	<b>1,106</b>

SOURCE: Office of the Registrar

## GRADUATE ENROLLMENT SUMMARY

	Fall 2000	Fall 2001	Fall 2002	Fall 2003	Fall 2004
<i>Headcount</i>					
Accountancy	5	12	12	14	32
Computer Science	15	21	39	43	37
Business	197	210	238	239	243
Education	332	316	419	424	422
Industrial and Organizational Psychology	-	-	-	-	14
Liberal Studies	-	-	-	-	14
Management Information Systems	--	25	51	52	65
Technology	38	33	31	33	31
Nursing	57	56	50	67	97
Public Administration	40	41	78	105	99
Non-Degree *	187	170	189	219	218
<b>Total</b>	<b>871</b>	<b>884</b>	<b>1,107</b>	<b>1,196</b>	<b>1,272</b>
Full-Time Equivalent (12 SCH = 1 FTE)	316	355	481	528	566
FTE/Headcount Ratio	0.363	0.402	0.435	0.441	0.445
<i>Residency Status for Tuition</i>					
In-State	656	646	745	763	828
Out-of-State With Waiver	152	167	188	123	79
Out-of-State No Waiver	63	71	174	310	365
Full-Time	64 7.3%	95 10.7%	132 11.9%	162 13.5%	166 13.1%
Part-Time	807 92.7%	789 89.3%	975 88.1%	1034 86.5%	1106 86.9%
Male	287 33.0%	326 36.9%	418 37.8%	454 38.0%	442 34.7%
Female	584 67.0%	558 63.1%	689 62.2%	742 62.0%	830 65.3%
<i>Race</i>					
White, Non-Hispanic Students	812	818	1,003	1,077	1,152
African American Students	19	22	36	46	51
Native American	2	1	1	2	5
Asian/Pacific Islander	16	18	27	25	23
Hispanic	6	5	2	4	11
International Students**	16	20	38	42	30

\* The majority of students in this category belong to the Rank 1 or 5th year program in Education.

\*\* Non-resident alien on student visas.

Source: Office of the Registrar and Office of Admissions.

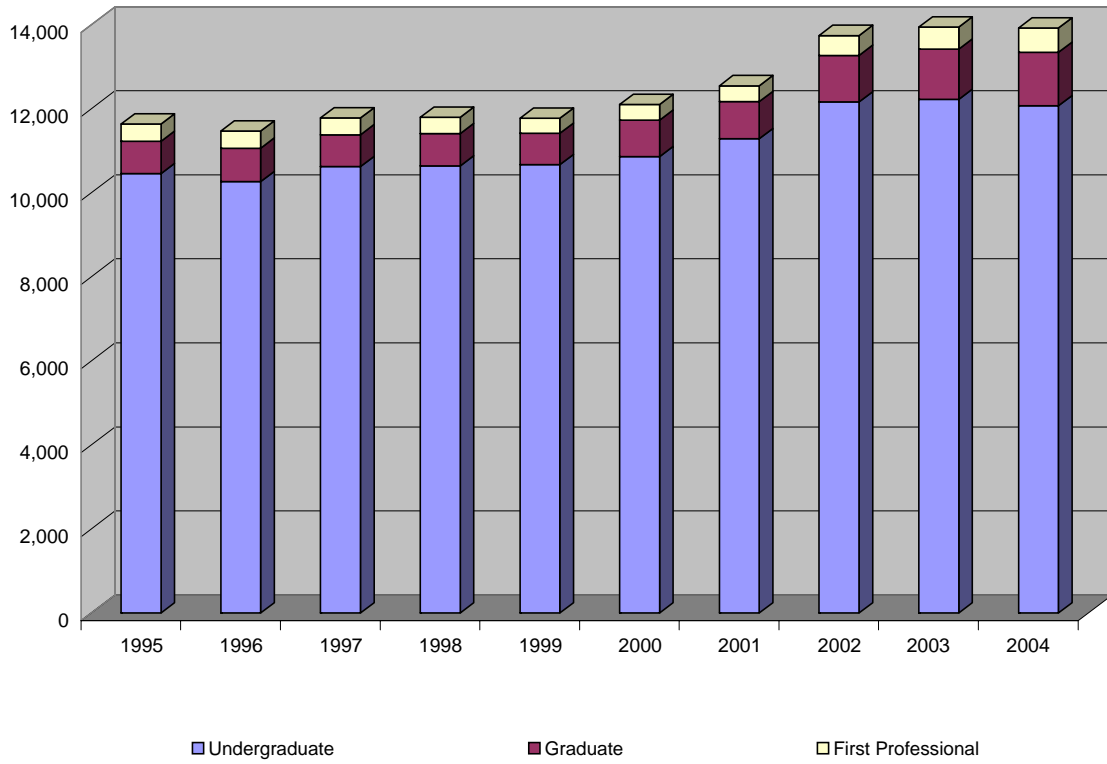
## SALMON P. CHASE COLLEGE OF LAW ENROLLMENT SUMMARY

	<b>Fall 2000</b>	<b>Fall 2001</b>	<b>Fall 2002</b>	<b>Fall 2003</b>	<b>Fall 2004</b>
<i>Headcount</i>	371	376	472	526	579
Full-Time Equivalent (14 SCH = 1 FTE)	325	332	411	467	503
FTE/Headcount Ratio	0.876	0.883	0.871	0.888	0.869
<i>Residency Status for Tuition</i>					
In-State	225	232	286	319	360
Out-of-State With Waiver	24	23	20	10	3
Out-of-State No Waiver	122	121	166	197	216
Full-Time % of Program	210 56.6%	213 56.6%	264 55.9%	307 58.4%	318 54.9%
Part-Time % of Program	161 43.4%	163 43.4%	208 44.1%	219 41.6%	261 45.1%
Male % of Program	203 54.7%	202 53.7%	259 54.9%	287 54.6%	325 56.1%
Female % of Program	168 45.3%	174 46.3%	213 45.1%	239 45.4%	254 43.9%
<i>Race</i>					
White, Non-Hispanic Students	350	355	439	481	538
African American Students	14	14	22	25	22
Native American	2	--	--	2	5
Asian/Pacific Islander	3	5	5	5	5
Hispanic	2	2	5	11	9
International Students*	--	--	1	2	0

\*Non-resident alien on student visa

SOURCE: Registrar's Office and Chase Law Admissions

## STUDENT ENROLLMENT BY PROGRAM LEVEL



YEARS	1995	1996	1997	1998	1999	2000	2001	2002	2003	2004
<b>Undergraduate</b>	10,460	10,269	10,625	10,643	10,672	10,859	11,288	12,164	12,223	12,070
<b>Graduate</b>	768	794	758	764	746	871	884	1,107	1,196	1,272
<b>First Professiona</b>	409	410	402	392	358	371	376	472	526	579

SOURCE: Office of the Registrar

**HEADCOUNT ENROLLMENT BY  
FULL-TIME AND PART-TIME STATUS WITHIN CLASSIFICATION**

	<b>Fall 2000</b>	<b>Fall 2001</b>	<b>Fall 2002</b>	<b>Fall 2003</b>	<b>Fall 2004</b>
<i>Full-Time</i>					
<i>Undergraduate</i>					
Freshman	3,146	3,282	3,480	3,539	3,393
Sophomore	1,575	1,639	1,688	1,837	1,749
Junior	1,261	1,451	1,528	1,648	1,620
Senior	1,584	1,626	1,813	1,921	2,051
Undergraduate Non-Degree	74	39	33	44	30
<i>Post Baccalaureate</i>					
Degree-Seeking	107	110	98	115	139
Non-Degree	19	10	14	11	12
Certificate	--	1	--	--	--
<i>Total Undergraduate and Post Baccalaureate</i>	<i>7,766</i>	<i>8,158</i>	<i>8,654</i>	<i>9,115</i>	<i>8,994</i>
<i>Graduate</i>					
Degree-Seeking	56	88	125	156	156
Non-Degree	8	7	7	6	10
Certificate	--	--	--	--	--
<i>First Professional</i>					
Degree-Seeking	209	212	263	307	318
Non-Degree	1	1	1	--	--
<b>TOTAL FULL-TIME</b>	<b>8,040</b>	<b>8,466</b>	<b>9,050</b>	<b>9,584</b>	<b>9,478</b>
<i>Part-Time</i>					
<i>Undergraduate</i>					
Freshman	682	663	840	633	649
Sophomore	492	513	537	477	508
Junior	525	481	576	508	495
Senior	798	832	830	822	886
Undergraduate Non-Degree	295	368	408	340	236
<i>Post Baccalaureate</i>					
Degree-Seeking	148	148	177	166	171
Non-Degree	151	124	138	160	118
Certificate	2	1	4	2	13
<i>Total Undergraduate and Post Baccalaureate</i>	<i>3,093</i>	<i>3,130</i>	<i>3,510</i>	<i>3,108</i>	<i>3,076</i>
<i>Graduate</i>					
Degree-Seeking	628	626	793	822	898
Non-Degree	179	163	182	212	178
Certificate	--	--	--	--	30
<i>First Professional</i>					
Degree-Seeking	161	162	207	219	261
Non-Degree	--	1	1	--	--
<b>TOTAL PART-TIME</b>	<b>4,061</b>	<b>4,082</b>	<b>4,485</b>	<b>4,361</b>	<b>4,443</b>
<b>TOTAL</b>	<b>12,101</b>	<b>12,548</b>	<b>13,535</b>	<b>13,945</b>	<b>13,921</b>

SOURCE: Office of the Registrar

**ENROLLMENT BY GENDER WITHIN STUDENT CLASSIFICATION**

	Fall 2000		Fall 2001		Fall 2002		Fall 2003		Fall 2004	
	Male	Female	Male	Female	Male	Female	Male	Female	Male	Female
<i>Undergraduate Degree-Seeking</i>	4,522 44.9%	5,541 55.1%	4,278 40.8%	6,209 59.2%	4,638 41.1%	6,654 58.9%	4,802 42.2%	6,583 57.8%	4,702 41.4%	6,649 58.6%
Freshman	1,608	2,220	1,707	2,238	1,860	2,460	1,798	2,374	1,668	2,374
Sophomore	796	1,271	841	1,311	913	1,312	957	1,357	895	1,362
Junior	701	1,085	758	1,174	853	1,251	926	1,230	883	1,232
Senior	1,417	965	972	1,486	1,012	1,631	1,121	1,622	1,256	1,681
<i>Undergraduate Non-Degree</i>	154	217	131	276	168	273	151	233	105	161
<i>Post Baccalaureate</i>	197 46.4%	228 53.6%	183 46.4%	211 53.6%	190 44.1%	241 55.9%	182 40.1%	272 59.9%	169 37.3%	284 62.7%
Degree	115	140	123	135	121	154	108	173	110	200
Non-Degree	82	88	60	76	69	87	74	99	56	74
Certificate									3	10
<b>TOTAL UNDERGRADUATE AND POST BACCALAUREATE</b>	<b>4,873 44.9%</b>	<b>5,986 55.1%</b>	<b>4,592 40.7%</b>	<b>6,696 59.3%</b>	<b>4,996 41.1%</b>	<b>7,168 58.9%</b>	<b>5,135 42.0%</b>	<b>7,088 58.0%</b>	<b>4,976 41.2%</b>	<b>7,094 58.8%</b>
<b>Graduate</b>	<b>287 33.0%</b>	<b>584 67.0%</b>	<b>326 36.9%</b>	<b>558 63.1%</b>	<b>418 37.8%</b>	<b>689 62.2%</b>	<b>454 38.0%</b>	<b>742 62.0%</b>	<b>442 34.7%</b>	<b>830 65.3%</b>
Degree	240	444	285	429	376	542	383	595	378	676
Non-Degree	47	140	41	129	42	147	71	147	62	126
Post Master's Certificate									2	28
<b>First Professional</b>	<b>203 54.7%</b>	<b>168 45.3%</b>	<b>202 53.7%</b>	<b>174 46.3%</b>	<b>259 54.9%</b>	<b>213 45.1%</b>	<b>287 54.6%</b>	<b>239 45.4%</b>	<b>325 56.1%</b>	<b>254 43.9%</b>
Degree	203	167	201	173	257	213	287	239	325	254
Non-Degree	0	1	1	1	2	0	0	0	0	0
<b>TOTAL ENROLLMENT</b>	<b>5,363 44.3%</b>	<b>6,738 55.7%</b>	<b>5,120 40.8%</b>	<b>7,428 59.2%</b>	<b>5,673 41.3%</b>	<b>8,070 58.7%</b>	<b>5,876 42.1%</b>	<b>8,069 57.9%</b>	<b>5,743 41.3%</b>	<b>8,178 58.7%</b>

SOURCE: Office of the Registrar.

**FTE ENROLLMENT OF ALL STUDENTS  
FULL-TIME AND PART-TIME  
BY CLASSIFICATION**

	<b>Fall 2000</b>	<b>Fall 2001</b>	<b>Fall 2002</b>	<b>Fall 2003</b>	<b>Fall 2004</b>
<b>Full-Time</b>					
<i>Undergraduate</i>					
Freshman	2,682	2,824	2,970	3,055	2,905
Sophomore	1,386	1,455	1,486	1,636	1,530
Junior	1,138	1,316	1,358	1,484	1,443
Senior	1,440	1,492	1,638	1,736	1,845
<i>Post Baccalaureate</i>					
Degree	95	98	85	115	135
Non-Degree	18	9	12	9	10
<i>Graduate</i>	52	80	112	134	134
<i>First Professional</i>	222	227	278	329	339
<i>Undergraduate Non-Degree</i>	63	34	27	36	23
<b>TOTAL FULL-TIME</b>	<b>7,096</b>	<b>7,537</b>	<b>7,966</b>	<b>8,534</b>	<b>8,364</b>
<b>Part-Time</b>					
<i>Undergraduate</i>					
Freshman	290	278	353	270	288
Sophomore	199	207	220	200	218
Junior	206	197	236	204	205
Senior	322	337	339	343	368
<i>Post Baccalaureate</i>					
Degree-Seeking	53	54	65	57	66
Non-Degree	38	33	36	43	33
Certificate					2
<i>Graduate</i>	264	275	369	395	432
<i>First Professional</i>	104	105	134	139	164
<i>Undergraduate Non-Degree</i>	75	82	100	80	57
<b>TOTAL PART-TIME</b>	<b>1,551</b>	<b>1,567</b>	<b>1,852</b>	<b>1,731</b>	<b>1,833</b>
<b>TOTAL</b>	<b>8,647</b>	<b>9,104</b>	<b>9,818</b>	<b>10,265</b>	<b>10,197</b>

NOTE: Precision of some figures affected by rounding

SOURCE: Office of the Registrar

## ENROLLMENT SUMMARY OF FIRST-TIME STUDENTS

	Fall 2000	Fall 2001	Fall 2002	Fall 2003	Fall 2004
<i>Headcount</i>	2,238	2,328	2,625	2,596	2,547
First-Time Freshmen	1,788	1,867	1,977	2,002	1,952
Other First-Time Undergraduates *			3	1	-
Undergraduate Non-Degree	171	136	182	158	82
Graduate	131	202	261	238	287
First Professional	148	123	202	197	226
 <i>Full-Time Equivalent</i>	 1,738	 1,829	 2,009	 2,063	 2,013
<i>FTE/Headcount Ratio</i>	0.777	0.786	0.765	0.795	0.790
 <i>Residency Status for Tuition</i>					
In-State	1,702	1,773	1,961	1,844	1,741
Out-of-State With Waiver	126	149	86	99	121
Out-of-State No Waiver	410	406	578	653	685
 <i>Full-Time</i>	 1,779 79.5%	 1,862 80.0%	 1,980 75.4%	 2,096 80.7%	 1,979 77.7%
 <i>Part-Time</i>	 459 20.5%	 466 20.0%	 645 24.6%	 500 19.3%	 568 22.3%
 <i>Male</i>	 990 44.2%	 1,014 43.6%	 1,144 43.6%	 1,136 43.8%	 1,078 42.3%
 <i>Female</i>	 1,248 55.8%	 1,314 56.4%	 1,481 56.4%	 1,460 56.2%	 1,469 57.7%
 <i>Race</i>					
White, Non-Hispanic Students	2,063	2,121	2,352	2,352	2,317
African American Students	119	128	170	131	145
Native American	7	8	6	8	9
Asian/Pacific Islander	23	24	31	28	23
Hispanic	8	18	19	25	28
International Students	18	29	47	52	25

\* Other First-Time Undergraduates are degree-seeking students entering college with advanced standing above freshmen level. NKU is their first college experience since high school graduation.

SOURCE: Office of the Registrar.

## ENROLLMENT SUMMARY OF FIRST-TIME TRANSFER STUDENTS

	Fall 2000	Fall 2001	Fall 2002	Fall 2003	Fall 2004
<i>Headcount</i>	646	655	705	682	681
Undergraduate Degree-Seekers					
Freshmen	218	218	262	236	203
Sophomore	193	160	159	176	196
Junior	172	206	223	220	209
Senior	53	66	61	48	70
Post Baccalauareate	7	1	--	--	2
First Professional	3	4	4	2	1
<i>Residency Status for Tuition</i>					
In-State	327	288	335	297	330
Out-of-State w/ Waiver	125	109	75	92	96
Out-of-State No Waiver	194	258	295	293	255
<i>Full-Time</i>	491 76.0%	530 80.9%	520 73.8%	556 81.5%	545 80.0%
<i>Part-Time</i>	155 24.0%	125 19.1%	185 26.2%	126 18.5%	136 20.0%
<i>Male</i>	275 42.6%	269 41.1%	297 42.1%	318 46.6%	277 40.7%
<i>Female</i>	371 57.4%	386 58.9%	408 57.9%	364 53.4%	404 59.3%
<i>Kentucky Community Colleges</i>	58	48	47	53	52
<i>Kentucky Public Universities</i>	114	91	107	111	138
<i>Kentucky Independent Colleges and Universities</i>	39	46	62	41	43
<i>Out-of-State Institutions</i>	435	470	489	477	448

SOURCE: Office of the Registrar

## STUDENT ENROLLMENT BY RACE AND GENDER

	Fall 2000			Fall 2001			Fall 2002			Fall 2003			Fall 2004		
	Male	Female	Total	Male	Female	Total	Male	Female	Total	Male	Female	Total	Male	Female	Total
<i>Undergraduate Students</i>															
White, Non-Hispanic	5,975	4,164	10,139	4,284	6,130	10,414	4,628	6,505	11,133	4,737	6,429	11,166	4,578	6,449	11,027
African American	293	122	415	157	357	514	171	430	601	176	406	582	184	395	579
American Indian/Alaskan Native	20	10	30	13	23	36	9	19	28	10	19	29	6	20	26
Asian or Pacific Islander	65	35	100	33	64	97	45	74	119	44	72	116	51	66	117
Hispanic	30	19	49	24	53	77	38	62	100	38	69	107	43	72	115
International	57	69	126	81	69	150	105	78	183	130	93	223	114	92	206
<b>Total Undergraduates</b>			<b>10,859</b>			<b>11,288</b>			<b>12,164</b>			<b>12,223</b>			<b>12,070</b>
<i>Graduate Students</i>															
White, Non-Hispanic	546	266	812	294	524	818	368	635	1,003	394	683	1,077	387	765	1,152
African American	15	4	19	10	12	22	13	23	36	21	25	46	20	31	51
American Indian/Alaskan Native	1	1	2	0	1	1	1	0	1	0	2	2	0	5	5
Asian or Pacific Islander	6	10	16	11	7	18	11	16	27	12	13	25	14	9	23
Hispanic	5	1	6	1	4	5	1	1	2	1	3	4	3	8	11
International	11	5	16	10	10	20	24	14	38	26	16	42	18	12	30
<b>Total Graduates</b>			<b>871</b>			<b>884</b>			<b>1,107</b>			<b>1,196</b>			<b>1,272</b>
<i>First Professional Students</i>															
White, Non-Hispanic	158	192	350	196	159	355	244	195	439	270	211	481	308	230	538
African American	5	9	14	5	9	14	10	12	22	9	16	25	5	17	22
American Indian/Alaskan Native	2	0	2	0	0	0	0	0	0	1	1	2	4	1	5
Asian or Pacific Islander	2	1	3	1	4	5	2	3	5	2	3	5	3	2	5
Hispanic	1	1	2	0	2	2	3	2	5	5	6	11	5	4	9
International	0	0	0	0	0	0	0	1	1	0	2	2	0	0	0
<b>Total First Professional</b>			<b>371</b>			<b>376</b>			<b>472</b>			<b>526</b>			<b>579</b>
<i>Total University Students</i>															
White, Non-Hispanic	6,679	4,622	11,301	4,774	6,813	11,587	5,240	7,335	12,575	5,401	7,323	12,724	5,273	7,444	12,717
African American	313	135	448	172	378	550	194	465	659	206	447	653	209	443	652
American Indian/Alaskan Native	23	11	34	13	24	37	10	19	29	11	22	33	10	26	36
Asian or Pacific Islander	73	46	119	45	75	120	58	93	151	58	88	146	68	77	145
Hispanic	36	21	57	25	59	84	42	65	107	44	78	122	51	84	135
International	68	74	142	91	79	170	129	93	222	156	111	267	132	104	236
<b>Totals by Gender</b>	<b>7,192</b>	<b>4,909</b>	<b>12,101</b>	<b>5,120</b>	<b>7,428</b>	<b>12,548</b>	<b>5,673</b>	<b>8,070</b>	<b>13,743</b>	<b>5,876</b>	<b>8,069</b>	<b>13,945</b>	<b>5,743</b>	<b>8,178</b>	<b>13,921</b>

Note: International students are non-resident aliens in the United States under J-1 visa status.

Source: Office of the Registrar.

## STUDENT ENROLLMENT BY RACE AND RESIDENCY

	Fall 2000		Fall 2001		Fall 2002		Fall 2003		Fall 2004	
	Kentucky Resident	Non Resident	Kentucky Resident	Non Resident	Kentucky Resident	Non Resident	Kentucky Resident	Non Resident	Kentucky Resident	Non Resident
<i>Undergraduate Students</i>										
White, Non-Hispanic	7,943	2,196	8,091	2,323	8,589	2,544	8,414	2,752	8,191	2,836
African American	238	177	316	198	363	238	344	238	342	237
American Indian/Alaskan Native	19	11	23	13	15	13	20	9	18	8
Asian or Pacific Islander	67	33	74	23	91	28	93	23	87	30
Hispanic	40	9	63	14	80	20	92	15	97	18
International	2	124	2	148	0	183	0	223	0	206
<b>Total Undergraduates</b>	<b>8,309</b>	<b>2,550</b>	<b>8,569</b>	<b>2,719</b>	<b>9,138</b>	<b>3,026</b>	<b>8,963</b>	<b>3,260</b>	<b>8,735</b>	<b>3,335</b>
<i>Graduate Students</i>										
White, Non-Hispanic	636	176	621	197	715	288	728	349	792	360
African American	7	12	13	9	15	21	19	27	14	37
American Indian/Alaskan Native	2	0	1	--	1	0	1	1	2	3
Asian or Pacific Islander	7	9	9	9	13	14	14	11	14	9
Hispanic	4	2	2	3	1	1	1	3	6	5
International	0	16	5	15	0	38	0	42	0	30
<b>Total Graduates</b>	<b>656</b>	<b>215</b>	<b>651</b>	<b>233</b>	<b>745</b>	<b>362</b>	<b>763</b>	<b>433</b>	<b>828</b>	<b>444</b>
<i>First Professional Students</i>										
White, Non-Hispanic	218	132	225	130	276	163	304	177	343	195
African American	3	11	5	9	7	15	7	18	7	15
American Indian/Alaskan Native	2	0	0	0	0	0	1	1	3	2
Asian or Pacific Islander	1	2	1	4	1	4	1	4	1	4
Hispanic	1	1	1	1	2	3	6	5	6	3
International	0	0	0	0	0	1	0	2	0	0
<b>Total First Professional</b>	<b>225</b>	<b>146</b>	<b>232</b>	<b>144</b>	<b>286</b>	<b>186</b>	<b>319</b>	<b>207</b>	<b>360</b>	<b>219</b>
<i>Total University Students</i>										
White, Non-Hispanic	8,797	2,504	8,937	2,650	9,580	2,995	9,446	3,278	9,326	3,391
African American	248	200	334	216	385	274	370	283	363	289
American Indian/Alaskan Native	23	11	24	13	16	13	22	11	23	13
Asian or Pacific Islander	75	44	84	36	105	46	108	38	102	43
Hispanic	45	12	66	18	83	24	99	23	109	26
International	2	140	7	163	0	222	0	267	0	236
<b>Totals by Gender</b>	<b>9,190</b>	<b>2,911</b>	<b>9,452</b>	<b>3,096</b>	<b>10,169</b>	<b>3,574</b>	<b>10,045</b>	<b>3,900</b>	<b>9,923</b>	<b>3,998</b>

Note: International students are non-resident aliens in the United States under J-1 visa status.

Source: Office of the Registrar.

**Enrollment of Undergraduates by  
High School of Origin**

**Fall 2004**

<b>KENTUCKY High Schools</b>	<b>First Freshman</b>	<b>Total</b>	<b>KENTUCKY High Schools</b>	<b>First Freshman</b>	<b>Total</b>
ACAD OF OUR LADY OF MERCY HS	0	2	CENTRAL HARDIN HS	0	2
ADAIR CO HS	1	2	CENTRAL HS	0	5
ALLEN CENTRAL HS	0	2	CHRISTIAN ACAD OF LOUISVILLE HS	1	4
ALLEN CO SCOTTSVILLE HS	0	2	CHRISTIAN CO HS	0	1
ANDERSON CO HS	1	3	CLAY CO HS	0	1
APOLLO HS	0	1	CLAYS MILL ROAD CHRISTIAN ACAD	0	1
ASSUMPTION HS	2	10	COMMUNITY CHRISTIAN ACAD HS	7	22
ATHERTON HS	5	9	CONNER SR HS	72	396
AUGUSTA HS	8	15	CORBIN HS	4	8
BALLARD HS	0	12	COVINGTON CATH HS	24	180
BALLARD MEMORIAL HS	0	2	COVINGTON LATIN HS	3	35
BARDSTOWN	1	1	CRITTENDEN CO HS	0	1
BATH CO HS	0	1	DANVILLE HS	0	6
BEECHWOOD HS	7	95	DAVIESS CO HS	4	8
BELFRY HS	0	2	DAYTON HS	13	68
BELLEVUE HS	10	74	DEMING HS	0	1
BEREA COMM HS	2	4	DESALES HS	0	1
BETH HAVEN CHRISTIAN HS	0	1	DIXIE HEIGHTS SR HS	74	397
BETHLEHEM HS	0	1	DOSS HS	1	3
BETSY LAYNE HS	0	1	DUPONT MANUAL HS	7	24
BISHOP BROSSART HS	47	262	EAST CARTER CO HS	2	3
BOONE CO SR HS	60	428	EASTERN HS	5	22
BOURBON CO HS	0	4	ELIZABETHTOWN SR HS	0	1
BOWLING GREEN SR HS	0	4	EMINENCE HS	0	3
BOYD CO SR HS	0	8	ESTILL CO HS	0	1
BOYLE CO HS	0	2	FAIRDALE HS	0	1
BRACKEN CO HS	9	53	FEDS CREEK HS	0	1
BREATHITT CO HS	1	2	FERN CREEK HS	1	2
BROWN HS	1	2	FLEMING CO HS	0	3
BRYAN STATION SR HS	2	8	FORT KNOX HS	1	1
BULLITT CENTRAL HS	0	1	FRANKFORT HS	2	3
BULLITT EAST HS	1	4	FRANKLIN COUNTY HS	5	7
BUTLER CO HS	0	1	GALLATIN CO HS	11	47
BUTLER TRADITIONAL HS	11	24	GEORGE ROGERS CLARK HS	1	5
CALLOWAY CO HS	0	1	GLASGOW HS	0	3
CALVARY CHRISTIAN HS	12	64	GRANT CO HS	26	160
CAMPBELL CO HS	100	560	GRAVES CO HS	0	4
CARROLL CO HS	8	23	GRAYSON CO HS	0	1
CASEY CO HS	0	1	GREENUP CO SR HS	4	8
CAVERNA HS	0	1	GREENWOOD HS	1	3

**Enrollment of Undergraduates by  
High School of Origin (cont.)**

**Fall 2004**

<b>KENTUCKY High Schools</b>	<b>First Freshman</b>	<b>Total</b>	<b>KENTUCKY High Schools</b>	<b>First Freshman</b>	<b>Total</b>
HANCOCK CO HS	0	1	MARSHALL CO SR HS	0	1
HARLAN HS	0	1	MASON CO HS	11	45
HARRISON CO HS	1	4	MAYSVILLE HS	0	3
HARRODSBURG HS	0	2	MCCREARY CENTRAL HS	0	3
HART CO HS	1	2	MEADE CO HS	1	3
HEATH HS	0	2	MENIFEE CO HS	1	1
HENDERSON CO SR HS	0	3	MERCER CO HS	0	3
HENRY CLAY SR HS	6	11	MIDDLESBORO HS	0	1
HENRY CO HS	1	3	MILLARD HS	0	1
HERITAGE ACADEMY	11	30	MODEL LABORATORY HS	0	1
HIGHLANDS HS	50	293	MONTGOMERY CO HS	1	4
HOLMES SR HS	33	229	MONTICELLO HS	0	2
HOLY CROSS HS (LATONIA)	43	202	MOORE HS	1	2
HOLY CROSS HS (LOUISVILLE)	0	4	MUHLENBERG NORTH HS	0	1
HOLY ROSARY ACAD HS	0	1	NELSON CO SR HS	1	5
HOPKINSVILLE HS	1	2	NEWPORT ALTERNATIVE HS	0	1
HUGHES KIRK HS	0	2	NEWPORT CENTRAL CATH HS	31	192
IROQUOIS HS	1	4	NEWPORT CHRISTIAN ACAD HS	0	1
JEFFERSON COUNTY HS	0	2	NEWPORT HS	24	162
JEFFERSONTOWN HS	2	7	NICHOLAS CO HS	2	2
JESSAMINE CO HS	1	7	NORTH BULLITT HS	3	3
JOHNSON CENTRAL HS	1	4	NORTH LAUREL HS	0	1
KENTON CENTRAL HS	3	8	NORTHERN KENTUCKY CHRISTIAN	0	4
KENTUCKY COUNTRY DAY HS	0	1	NOTRE DAME ACADEMY	18	193
KNOTT CO CENTRAL HS	0	1	OLDHAM CO HS	4	15
KNOX CENTRAL HS	0	1	ONEIDA BAPTIST INST HS	1	3
LA SALETTE ACADEMY (Inactive)	0	1	ORCHARD STREET CHRISTIAN SCHOOL	2	2
LAFAYETTE SR HS	1	6	OTHER BOONE CO HS	0	1
LARRY A. RYLE HS	62	312	OTHER CARROLL CO HS	0	2
LARUE CO HS	0	1	OTHER FAYETTE CO HS	0	1
LETCHER HS	0	1	OTHER GRANT CO HS	0	1
LEWIS CO HS	1	7	OTHER HARDIN CO HS	0	1
LEXINGTON CATH HS	2	6	OTHER KENTON CO HS	0	2
LINCOLN CO HS	0	3	OTHER LEE CO HS	0	1
LLOYD HS	37	171	OTHER OHIO CO HS	0	1
LUDLOW HS	11	76	OTHER OWEN CO HS	0	1
LYNN CAMP HS	1	1	OUR LADY HIGHLANDS HS	0	1
MADISON CENTRAL HS	2	8	OUR LADY PROVIDENCE ACAD (Inactive)	0	6
MADISON SOUTHERN HS	0	1	OWEN CO HS	2	27
MADISONVILLE N HOPKINS HS	0	4	OWENSBORO CATH HS	0	2
MALE TRADITIONAL HS	6	14	OWENSBORO HS	0	1

**Enrollment of Undergraduates by  
High School of Origin (cont.)**

**Fall 2004**

<b>KENTUCKY High Schools</b>	<b>First Freshman</b>	<b>Total</b>	<b>KENTUCKY High Schools</b>	<b>First Freshman</b>	<b>Total</b>
PADUCAH TILGHMAN HS	1	2	SOUTH FLOYD HS	0	1
PAINTSVILLE HS	0	3	SOUTH LAUREL HS	2	2
PAUL G BLAZER HS	0	10	SOUTH OLDHAM HS	5	16
PAUL LAURENCE DUNBAR HS	3	13	SOUTHERN HS	1	5
PENDLETON CO HS	44	181	ST CAMILLUS ACADEMY HS	0	1
PERRY COUNTY CENTRAL HS	0	3	ST FRANCIS HS	0	1
PIKE COUNTY CENTRAL	0	1	ST HENRY HS	36	240
PIKEVILLE HS	0	1	ST MARY HS	0	3
PLEASANT VIEW CHRISTIAN SCH HS	1	1	ST PATRICK HS	1	9
PLEASURE RIDGE PARK HS	0	2	ST THOMAS HS (Inactive)	0	3
POWELL CO HS	0	2	ST XAVIER HS-LOUISVILLE	1	5
PRESENTATION ACAD HS	6	12	TATES CREEK SR HS	2	10
PRESTONBURG HS	0	2	TAYLOR CO HS	0	3
PROVIDENCE HS	0	3	TRIMBLE CO HS	3	18
PULASKI CO HS	0	2	TRINITY HS	2	6
RACELAND HS	1	4	UNIVERSITY HEIGHTS ACADEMY HS	0	1
RAMEY-ESTEP HS	0	1	VALLEY HS	0	3
ROCKCASTLE CO HS	0	1	VICTORY BAPTIST SCHOOL	1	2
ROSENWALD HS	0	1	VICTORY CHRISTIAN ACADEMY	0	1
ROWAN CO SR HS	1	2	VILLA MADONNA ACADEMY	14	66
RUSSELL HS	7	9	VIRGIE HS	0	2
RUSSELLVILLE HS	1	1	WAGGENER HS	0	3
SACRED HEART ACAD HS	0	4	WALTON VERONA HS	16	87
SCOTT CO SR HS	2	13	WARREN CENTRAL HS	2	3
SCOTT HS	63	372	WARREN EAST HS	0	2
SENECA HS	2	7	WASHINGTON CO HS	0	3
SHAWNEE HS	0	1	WAYNE CO HS	0	2
SHELBY CO HS	4	10	WEBSTER CO HS	0	1
SHELBY VALLEY HS	0	1	WEST CARTER CO HS	0	1
SHELDON CLARK HS	0	1	WESTERN HS	0	3
SILVER GROVE HS	4	18	WESTERN HILLS HS (Kentucky)	1	16
SIMON KENTON HS	84	409	WHITESBURG HS	0	1
SOMERSET HS	0	3	WILLIAMSBURG HS	1	1
			WILLIAMSTOWN HS	7	34
			WOLFE CO HS	0	2
			WOODFORD CO HS	2	3
			<b>Kentucky Total:</b>	<b>1,260</b>	<b>6,934</b>

**Enrollment of Undergraduates by  
High School of Origin**

**Fall 2004**

<b>OHIO High Schools</b>	<b>First Freshman</b>	<b>Total</b>	<b>OHIO High Schools</b>	<b>First Freshman</b>	<b>Total</b>
AIKEN HS	0	10	COMMUNITY CHRISTIAN SCHOOL	0	1
AMELIA HS	12	62	CREATIVE & PERFORMING ARTS HS	6	29
ANDERSON HS	24	119	CRESTVIEW HS	0	1
ARCHBISHOP ALTER HS	0	2	DAYTON CHRISTIAN HS	0	1
ARCHBOLD HS	0	1	DEER PARK HS	3	20
BATAVIA HS	7	25	DUBLIN HS	0	1
BEAVERCREEK HS	0	1	DUBLIN SCIOTO HS	0	2
BELLBROOK HS	0	1	DUNBAR HS	0	1
BELLEVUE HS	0	1	EAST CLINTON LOCAL HS	0	1
BETHEL CHRISTIAN ACADEMY	0	1	EASTERN HS	1	18
BETHEL HS	0	2	EASTERN LOCAL HS	0	1
BETHEL TATE SR HS	4	28	EASTERN LOCAL HS	0	1
BEXLEY HS	0	2	EATON HS	0	1
BLANCHESTER HS	1	8	EDGEWOOD HS	0	2
BOWLING GREEN SR HS	0	1	EDWARD LEE MCCLAIN HS	0	1
BROOKHAVEN HS	1	2	ELDER HS	10	69
BRYAN HS	0	1	ELIDA HS	0	1
BUTLER HS	0	3	ELLET SENIOR HS	1	2
CALVARY CHRISTIAN ACADEMY	0	1	FAIRBORN HS	1	1
CAMBRIDGE HS	0	1	FAIRFIELD HS	3	35
CARDINAL STRITCH HS	0	1	FAIRFIELD LOCAL HS	0	1
CARLISLE HS	0	1	FAIRLAND HS	0	1
CARROLL HS	0	1	FAIRMONT EAST HS (Inactive)	0	2
CEDARVILLE HS	1	1	FAYETTEVILLE HS	0	9
CENTENNIAL HS	0	1	FELICITY FRANKLIN HS	2	14
CENTERVILLE HS	2	5	FENWICK HS	0	4
CENTRAL BAPTIST HS	0	2	FINDLAY SENIOR HS	0	3
CENTRAL CATHOLIC HS	0	1	FINNEYTOWN HS	9	19
CHAMINADE-JULIENNE HS	1	2	FORT HAYES CAREER CTR	1	1
CHILLOCOTHE HS	0	1	FRANKLIN HS	0	1
CHRISTIAN CENTER ACADEMY	0	3	GAHANNA LINCOLN HS	0	1
CINCINNATI CHRISTIAN HS	0	2	GEORGETOWN HS	2	23
CINCINNATI HILLS CHRISTIAN ACAD	3	5	GLEN ESTE HS	21	87
CLAY HS	1	1	GODS BIBLE HS	0	1
CLERMONT-NORTHEASTERN HS	7	43	GOSHEN HS	6	33
CLEVELAND HEIGHTS HS	0	1	GRAHAM HS	0	1
CLINTON-MASSIE HS	0	1	GREENEVIEW HS	0	1
COLDWATER HS	0	1	GREENHILLS HS	0	2
COLERAIN HS	14	56	GROVE CITY HS	1	2
COLONEL WHITE HS	2	5	GROVEPORT MADISON SR HS	0	1

**Enrollment of Undergraduates by  
High School of Origin (cont.)**

**Fall 2004**

OHIO High Schools	First		OHIO High Schools	First	
	Freshman	Total		Freshman	Total
HAMILTON HS	0	10	MEADOWDALE HS	0	1
HARRISON CHRISTIAN SCHOOL	0	1	MECHANICSBURG HS	0	1
HEALTH CAREERS CENTER	0	1	MENTOR HS	0	1
HIGHLAND HS	0	1	MIAMI TRACE HS	0	2
HILLIARD DARBY HS	0	1	MIAMI VALLEY HS	0	1
HILLSBORO HS	0	7	MIAMISBURG SR HS	1	1
HOOVER HS	0	1	MIDDLETOWN HS	0	4
HUDSON HS	0	1	MIFFLIN HS	0	1
HUGHES ADULT HS	0	5	MILFORD CHRISTIAN ACADEMY	0	1
HUGHES HS	4	35	MILFORD HS	16	94
INDIAN HILL HS	1	8	MINERVA HS	0	1
IRONTON HS	1	2	MINSTER HS	0	1
JACKSON HS	0	1	MOELLER HS	7	21
JEFFERSON HS	1	1	MOTHER OF MERCY HS	15	45
JOHNSTOWN-MONROE HIGH	0	1	MOUNT HEALTHY HS	5	20
KENTON RIDGE HS	1	1	MOUNT NOTRE DAME HS	7	30
KETTERING FAIRMONT HS	0	3	NEW RICHMOND HS	2	47
KINGS HS	2	15	NEWARK CATHOLIC HS	0	1
LAKEWOOD HS	0	1	NORTH ADAMS HS	1	7
LAKOTA EAST HS	5	20	NORTH COLLEGE HILL HS	1	9
LAKOTA WEST HS	4	21	NORTHMONT HS	0	3
LANCASTER HS	0	1	NORTHRIDGE HS	0	1
LANDMARK CHRISTIAN HS	0	1	NORTHWEST HS	0	1
LASALLE HS	13	54	NORTHWEST HS	5	30
LEBANON HS	1	8	NORTHWESTERN HS	0	2
LEHMAN HS	0	1	NORTHWOOD HS	0	1
LEXINGTON HS	0	1	NORWOOD BAPTIST CHRISTIAN SCHOOL	0	1
LIFE SKILLS CENTER HS	1	1	NORWOOD HS	11	53
LITTLE MIAMI HS	2	14	NOTRE DAME-CATHEDRAL LATIN	0	1
LOCKLAND HS	0	9	OAK HILL HS	0	6
LOUISVILLE HS	0	1	OAK HILLS HS (CINTI)	17	127
LOVELAND-HURST HS	7	33	OAKWOOD HS	0	1
LYNCHBURG-CLAY HS	0	5	OLENTANGY HS	1	1
MADEIRA HS	4	15	OTHER OHIO HS	3	12
MADISON PLAINS HS	0	1	OUR LADY OF ANGELS HS (Inactive)	0	1
MANCHESTER HS	0	3	PATRICK HENRY HS	0	1
MARIEMONT HS	5	19	PEEBLES HS	1	6
MARIETTA SENIOR HS	0	1	PERKINS HS	0	1
MARION CATHOLIC HS	0	1	PERRYSBURG HS	1	3
MARION HARDING HS	0	1	PETERSBURG HS	0	1
MCAULEY HS	11	40			
MCNICHOLAS HS	19	90			

**Enrollment of Undergraduates by  
High School of Origin (cont.)**

**Fall 2004**

OHIO High Schools	First		OHIO High Schools	First	
	Freshman	Total		Freshman	Total
PICKERINGTON HS	0	4	TAYLOR HS	4	22
PIKETON HS	0	1	TEMPLE CHRISTIAN SCHOOL	0	1
PIQUA HS	0	1	TIFFIN-CALVERT HS	0	1
POLAND SEMINARY HS	0	1	TRIMBLE LOCAL HS	0	1
PORTSMOUTH HS	1	2	TROTWOOD-MADISON HS	0	1
PORTSMOUTH WEST HS	0	1	TROY HS	0	2
PRINCETON HS	6	31	TURPIN HS	10	68
PURCELL MARIAN HS	8	36	TWIN VALLEY SOUTH	1	1
READING COMMUNITY HS	0	18	UPPER ARLINGTON HS	0	1
REGINA HS	0	1	URSULINE ACADEMY HS	2	10
REYNOLDSBURG HS	0	1	VALLEY LOCAL HS	0	1
RIPLEY-UNION-LEWIS HS	5	22	VALLEYVIEW HS	0	1
RIVERSIDE HS	0	1	WALNUT HILLS HS	7	46
ROCK HILL SENIOR HS	0	1	WALSH JESUIT HS	0	1
ROGER BACON HS	14	60	WAPAKONETA SENIOR HS	1	1
ROSS HS	4	17	WASHINGTON HS	0	1
ROY C START HS	0	2	WAUSEON HS	1	1
SAINT JOSEPH ACADEMY	0	1	WAYNE HS	0	3
SAINT URSULA ACADEMY	0	1	WAYNESVILLE HS	0	1
SETON HS	9	70	WEST CARROLLTON HS	0	2
SEVEN HILLS UPPER SCH HS	0	1	WEST HOLMES HS	1	1
SHAW HIGH SCHOOL	0	1	WEST UNION HS	0	1
SHAWNEE HS	0	1	WESTERN BROWN HS	5	28
SHRODER PAIDEIA ACADEMY	1	1	WESTERN HILLS ADULT HS	0	1
SOUTH HS	0	1	WESTERN HILLS HS (Cincinnati)	5	25
SOUTH POINT HS	0	1	WESTERN RESERVE ACADEMY	0	1
SPRINGBORO HS	1	3	WESTERVILLE-SOUTH HS	0	1
SPRINGFIELD LOCAL HS	0	1	WESTLAND HS	0	2
SPRINGFIELD NORTH HS	0	3	WHITEOAK HS	0	3
SPRINGFIELD SOUTH HS	0	1	WILLARD HS	0	1
ST BERNARD-ELMWOOD PLACE HS	5	8	WILLIAM HENRY HARRISON HS	11	43
ST CLAIRSVILLE HS	0	1	WILLIAM MASON HS	8	30
ST URSULA ACADEMY HS	2	8	WILLIAMSBURG HS	3	25
ST XAVIER HS-CINCINNATI	2	25	WILMINGTON HS	0	3
STEPHEN BADIN HS	3	8	WINTON WOODS/FORREST PARK H.S.	2	22
STRONGSVILLE SR HS	1	2	WITHROW HS	4	26
SUMMIT COUNTRY DAY HS	0	5	WOODROW WILSON HS	0	1
SYCAMORE HS	6	39	WOODWARD HS	1	10
TAFT HS	1	18	WOOSTER HS	0	2
TALAWANDA HS	3	6	WYOMING HS	3	7
			YELLOW SPRINGS HS	0	1

**Ohio Total: 464 2,587**

**Enrollment of Undergraduates by  
High School of Origin  
Fall 2004**

<b>INDIANA High Schools</b>	<b>First Freshman</b>	<b>Total</b>	<b>INDIANA High Schools</b>	<b>First Freshman</b>	<b>Total</b>
BATESVILLE HS	3	20	MADISON GRANT HS	0	1
BEECH GROVE HS	0	1	MARION HS	0	1
BEN DAVIS HS	0	3	MILAN JR SR HS	1	15
BLOOMINGTON HS - North	0	1	MORGAN TOWNSHIP SCHOOL	0	1
BROWN COUNTY HS	0	1	NEW ALBANY HS	0	1
BROWNSTOWN CENTRAL HS	0	1	NEW HAVEN HS	0	1
CARMEL HS	0	1	NORTH CENTRAL HS	0	1
CENTRAL HS	0	1	NORTH DECATUR HS	0	1
CHESTERTON HS	1	1	NORTH KNOX HS	0	1
COLUMBIA CITY HS	0	1	NORTHROP HS	0	1
COLUMBUS EAST HS	0	2	OAK HILL HS	0	1
COWAN HS	0	1	OLDENBURG ACADEMY	6	12
CROWN POINT HS	0	1	OTHER INDIANA HS	0	2
EAST CENTRAL HS	45	160	PIKE CENTRAL HS	0	1
EAST NOBLE HS	0	1	PIKE HS	0	2
EMERSON SCH VISUAL/PRFMG ARTS	0	1	RISING SUN HS	6	34
FLOYD CENTRAL HS	1	2	RIVER FOREST JR-SR HS	0	1
FRANCIS J REITZ HS	0	1	RONCALLI HS	0	1
FRANKLIN COUNTY HS	10	30	SAINT JOSEPHS HS	1	1
GREENWOOD COMMUNITY HS	0	1	SEYMOUR HS	0	2
GRIFFITH HS	0	1	SOUTH ADAMS HS	0	1
HAMILTON HEIGHTS HS	0	2	SOUTH DEARBORN HS	19	87
HAMILTON SOUTHEASTERN HS	0	1	SOUTH DECATUR HS	0	1
HARMONY SCHOOL	0	1	SOUTH RIPLEY JR SR HS	3	11
HUNTINGTON NORTH HS	0	1	SOUTHSIDE HS	0	1
JAC-CEN-DEL JR SR HS	0	5	SOUTHWESTERN JR SR HS	1	1
JEFFERSON HS	0	1	SWITZERLAND CO JR SR HS	6	18
JEFFERSONVILLE HS	0	2	TRITON CENTRAL HS	0	1
JENNINGS COUNTY HS	0	1	TRI-WEST HENDRICKS HS	0	1
LASALLE HS	0	1	WARREN CENTRAL HS	1	2
LAWRENCEBURG HS	9	56	WEST SIDE HS	0	1
LINCOLN HS	0	1	WESTERN HS	0	1
MADISON CONSOLIDATED HS	4	16			
			<b>Indiana Total:</b>	<b>116</b>	<b>509</b>

**Enrollment of Undergraduates by  
High School of Origin  
Fall 2004**

<b>High Schools</b>	<b>First Freshman</b>	<b>Total</b>	<b>High Schools</b>	<b>First Freshman</b>	<b>Total</b>
Not on file	2	261	HOME SCHOOLED IN-STATE	8	35
GED CERTIFICATE	52	323	HOME SCHOOLED OUT-OF-STATE	4	15
			<b>Other Total:</b>	<b>66</b>	<b>634</b>