

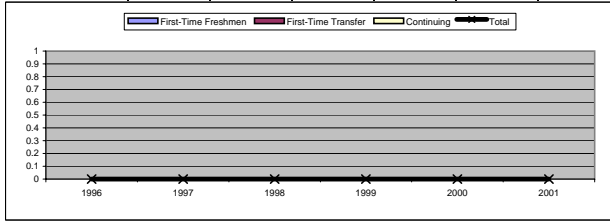
User's Guide to the Tables in This Report

Program and Credit Hour Profile

College:
Department:

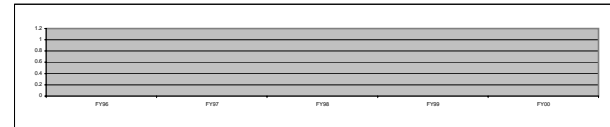
Degree Program:

	Fall Semesters						
	1996	1997	1998	1999	2000	2001	2002
First-Time Freshmen							
First-Time Transfer							
Continuing							
Total	0	0	0	0	0	0	0



	F96-F97	F97-F98	F98-F99	F99-F00	F00-F01	F01-F02
	In Major	#DIV/0!	#DIV/0!	#DIV/0!	#DIV/0!	#DIV/0!
Changed Major	#DIV/0!	#DIV/0!	#DIV/0!	#DIV/0!	#DIV/0!	#DIV/0!
Total retained in Univ.	0	0	0	0	0	0
	#DIV/0!	#DIV/0!	#DIV/0!	#DIV/0!	#DIV/0!	#DIV/0!

	FY96	FY97	FY98	FY99	FY00	FY01	FY02
	Degrees Conferred in Major:						



Navigation guide to the tables in this report.

Purpose: To provide tabled data & graphic summary of a department's academic program and credit hour activity for several years. For the College of Education data are consolidated to the college level.

Program: Program name and CIP code used for state reporting. Classification of Instructional Program (CIP) codes are a federal taxonomy of academic programs.

First-time Freshmen entering the program in Fall semester.
First-time transfer entering program at freshmen through senior level.
Continuing- all students whose NKU enrollment continues.
Pre-majors are counted in the program.

Freshmen retention: From the freshman count of prior fall, the number still enrolled in the program and the number who changed to another major.

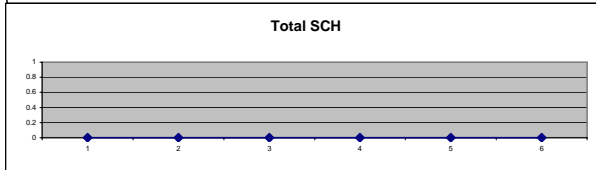
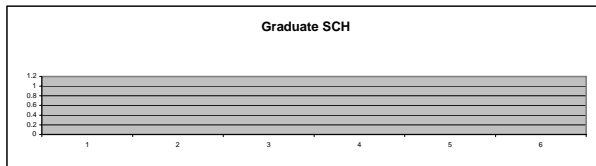
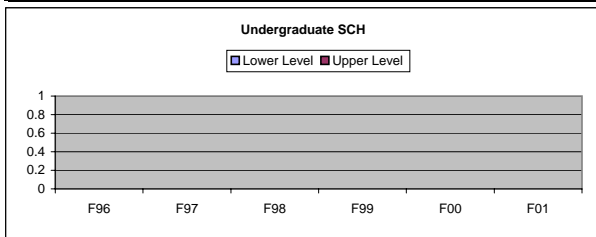
Degrees conferred on the August, December, May cycle

These tables repeat for each degree program in the department

Student Credit Hours Produced

Course Discipline:

	F96	F97	F98	F99	F00	F01	F02
Lower Level							
Upper Level							
Ugrad Total	0	0	0	0	0	0	0
Graduate							
Total	0	0	0	0	0	0	0



Tabulated and graphic summary of credit hours produced in the Fall semester by students enrolled in the specified course discipline. There is a table for each course discipline taught by a department

The data in this report should match data that appear in the "Management Information Reports" fact book. This report is produced using a template. Therefore, not all tables or graphs may have data presented.

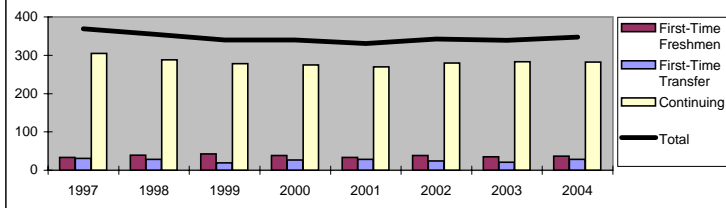
In the lower right footer is a page count for the number of pages in an individual department's report.

Program and Credit Hour Profile

College: **Business**
 Department: **Accountancy**

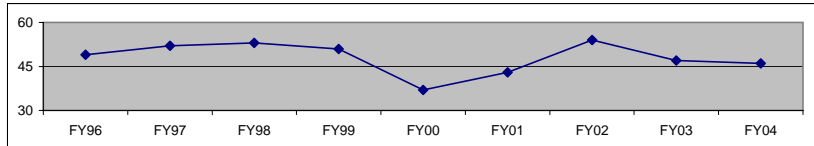
Degree Program: **Accounting, Bachelor's** (CIP: 52.0301)

	Fall Semesters								
	1996	1997	1998	1999	2000	2001	2002	2003	2004
First-Time Freshmen	32	33	39	43	38	33	38	35	37
First-Time Transfer	27	31	28	19	27	28	24	21	28
Continuing	308	305	288	278	275	270	280	283	282
Total	367	369	355	340	340	331	342	339	347



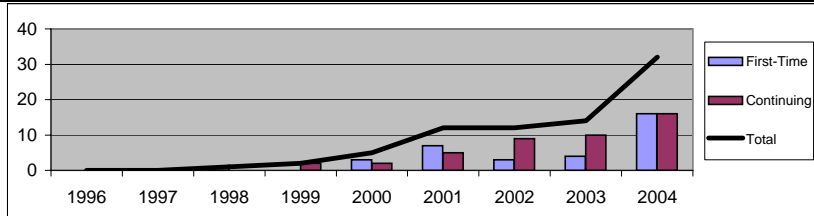
	F96-F97	F97-F98	F98-F99	F99-F00	F00-F01	F01-F02	F02-F03	F03-F04
	In Major	23 72%	27 82%	19 49%	31 72%	28 74%	22 67%	25 66%
Changed Major	1 3%	1 3%	7 18%	3 7%	4 11%	2 6%	2 5%	2 6%
Total retained in Univ.	24 75%	28 85%	26 67%	34 79%	32 84%	24 73%	27 71%	26 74%

Degrees Conferred in Major:	FY96	FY97	FY98	FY99	FY00	FY01	FY02	FY03	FY04
	49	52	53	51	37	43	54	47	46



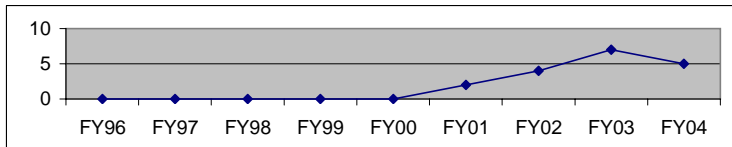
Degree Program: **Accounting, Master's** (CIP:52.0301)

	Fall Semesters								
	1996	1997	1998	1999	2000	2001	2002	2003	2004
First-Time	0	0	1	0	3	7	3	4	16
Continuing	0	0	0	2	2	5	9	10	16
Total	0	0	1	2	5	12	12	14	32



	F96-F97	F97-F98	F98-F99	F99-F00	F00-F01	F01-F02	F02-F03	F03-F04
	In Major	0	0	0	0	1 33%	2 29%	0 0%
Changed Major	0	0	0	0	0 0%	1 14%	0 0%	0 0%
Total retained in Univ.	0	0	0	0	1 33%	3 43%	0 0%	2 50%

Degrees Conferred in Major:	FY96	FY97	FY98	FY99	FY00	FY01	FY02	FY03	FY04
	0	0	0	0	0	2	4	7	5

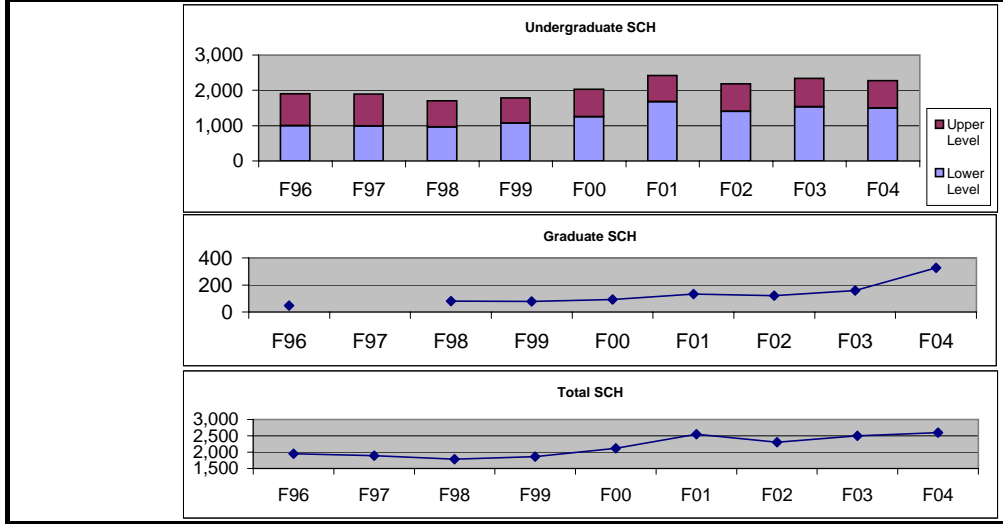


Program and Credit Hour Profile

College: **Business**
 Department: **Accountancy**

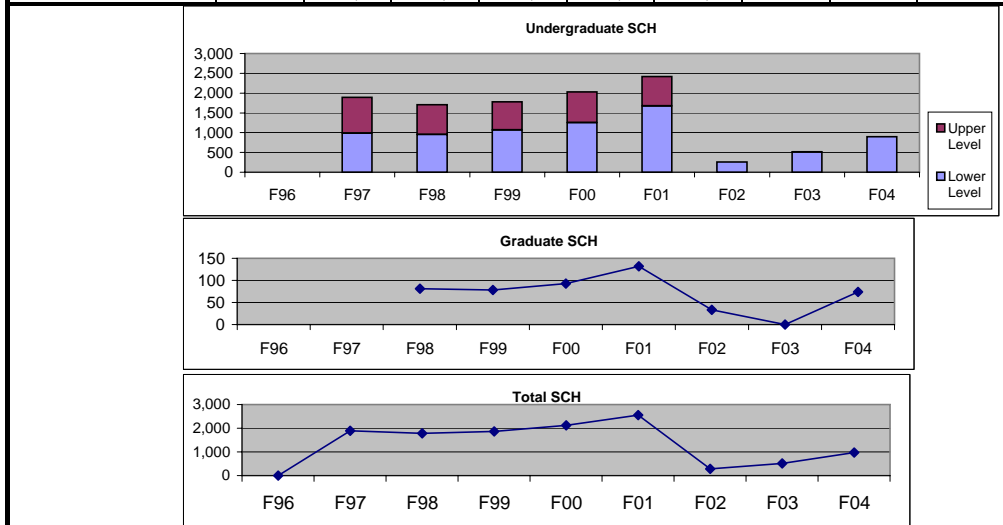
Student Credit Hours Produced
 Course Discipline: **ACC**

	F96	F97	F98	F99	F00	F01	F02	F03	F04
Lower Level	996	987	957	1,068	1,255	1,673	1,408	1,530	1,492
Upper Level	906	903	748	714	774	745	776	809	782
Ugrad Total	1,902	1,890	1,705	1,782	2,029	2,418	2,184	2,339	2,274
Graduate	48		81	78	93	132	120	159	326
Total	1,950	1,890	1,786	1,860	2,122	2,550	2,304	2,498	2,600



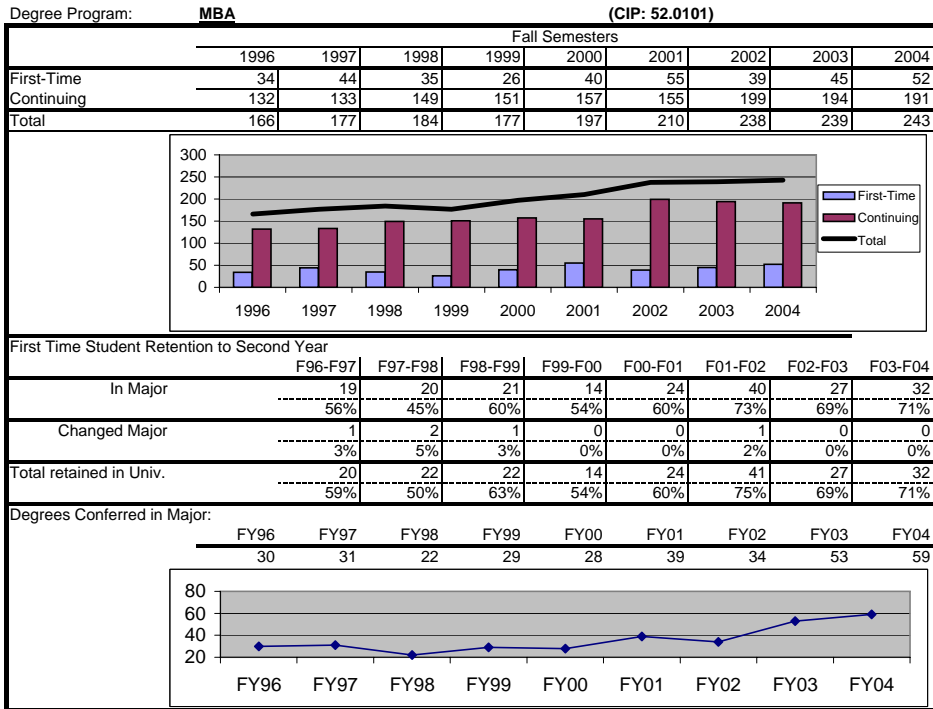
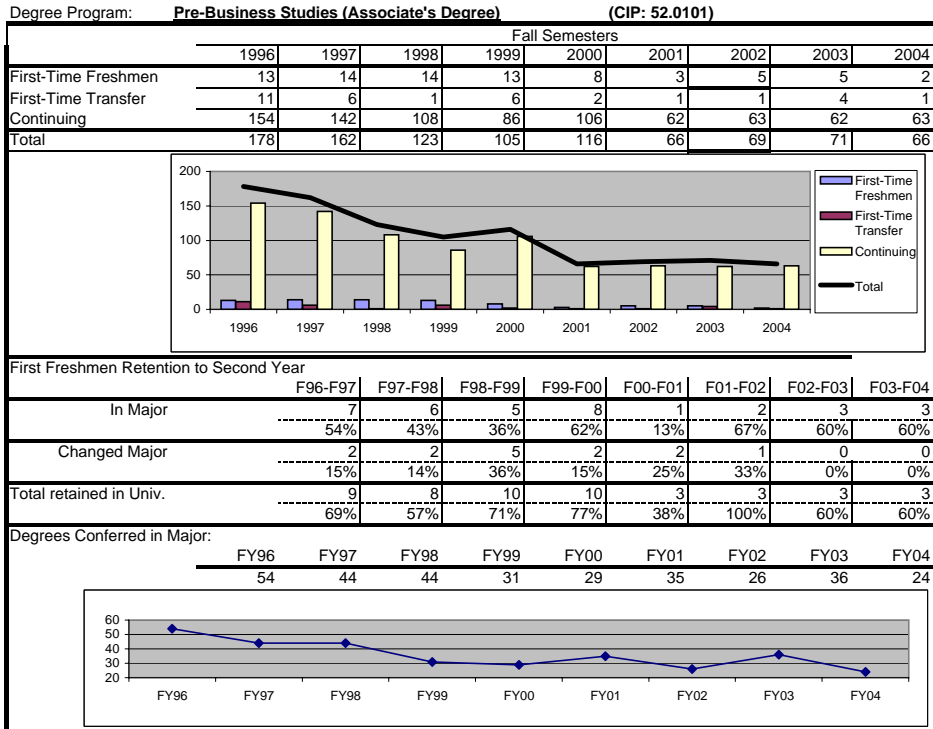
Student Credit Hours Produced
 Course Discipline: **BUS**

	F96	F97	F98	F99	F00	F01	F02	F03	F04
Lower Level		987	957	1,068	1,255	1,673	255	513	897
Upper Level		903	748	714	774	745	2	2	3
Ugrad Total	0	1,890	1,705	1,782	2,029	2,418	257	515	900
Graduate			81	78	93	132	33	0	74
Total	0	1,890	1,786	1,860	2,122	2,550	290	515	974



Program and Credit Hour Profile

College: **Business**
 Department: **Dean's Office**

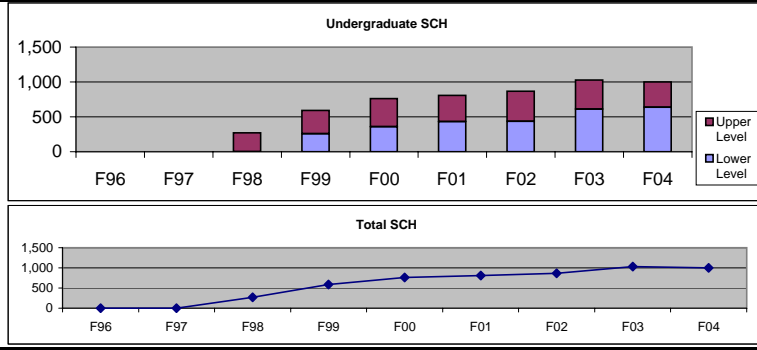


Program and Credit Hour Profile

College: **Business**
 Department: **Dean's Office**

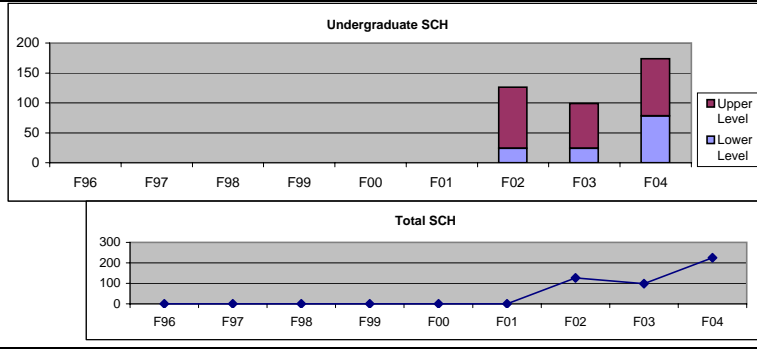
Student Credit Hours Produced
 Course Discipline: **COB**

	F96	F97	F98	F99	F00	F01	F02	F03	F04
Lower Level	0	0	0	258	357	429	438	612	636
Upper Level	0	0	270	333	405	380	428	417	363
Ugrad Total	0	0	270	591	762	809	866	1,029	999
Graduate	0	0	0	0	0	0			
Total	0	0	270	591	762	809	866	1,029	999



Course Discipline: **ENTP**

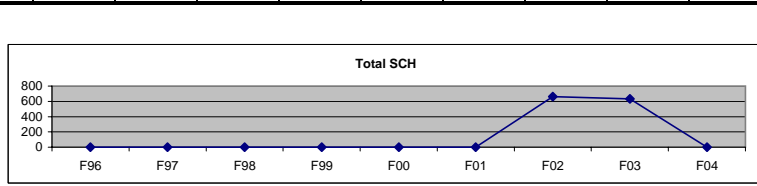
	F96	F97	F98	F99	F00	F01	F02	F03	F04
Lower Level							24	24	78
Upper Level							102	75	96
Ugrad Total	0	0	0	0	0	0	126	99	174
Graduate	0	0	0	0	0	0			51
Total	0	0	0	0	0	0	126	99	225



Course Discipline: **MBA**

Not Offered

	F96	F97	F98	F99	F00	F01	F02	F03	F04
Lower Level							0	0	
Upper Level							0	0	
Ugrad Total	0	0	0	0	0	0	0	0	0
Graduate	0	0	0	0	0	0	663	633	
Total	0	0	0	0	0	0	663	633	0

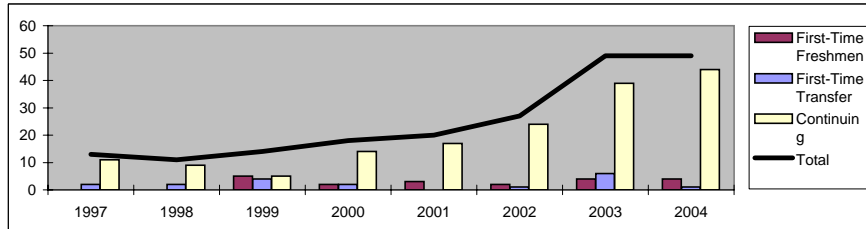


Program and Credit Hour Profile

College: **Business**
 Department: **Economics**

Degree Program: **Economics** (CIP: 52.0601)

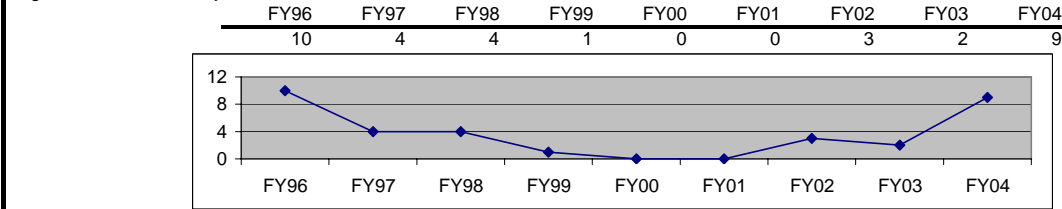
	Fall Semesters								
	1996	1997	1998	1999	2000	2001	2002	2003	2004
First-Time Freshmen	0	0	0	5	2	3	2	4	4
First-Time Transfer	1	2	2	4	2	0	1	6	1
Continuing	15	11	9	5	14	17	24	39	44
Total	16	13	11	14	18	20	27	49	49



First Freshmen Retention to Second Year

	F96-F97	F97-F98	F98-F99	F99-F00	F00-F01	F01-F02	F02-F03	F02-F04
In Major	0 0%	0 0%	0 0%	3 60%	2 100%	2 67%	2 100%	3 75%
Changed Major	0 0%	0 0%	0 0%	1 20%	0 0%	0 0%	0 0%	0 0%
Total retained in Univ.	0 0%	0 0%	0 0%	4 80%	2 100%	2 67%	2 100%	3 75%

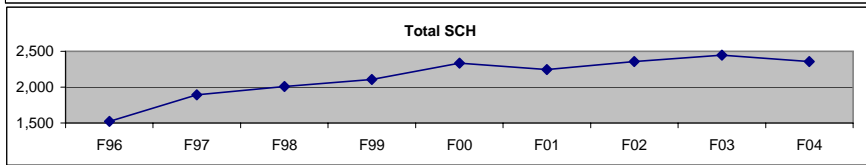
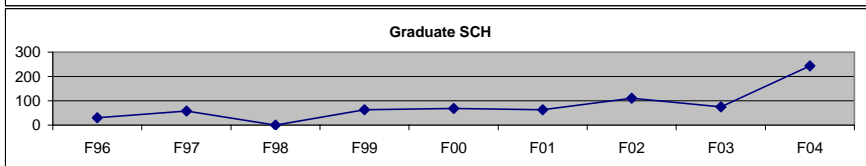
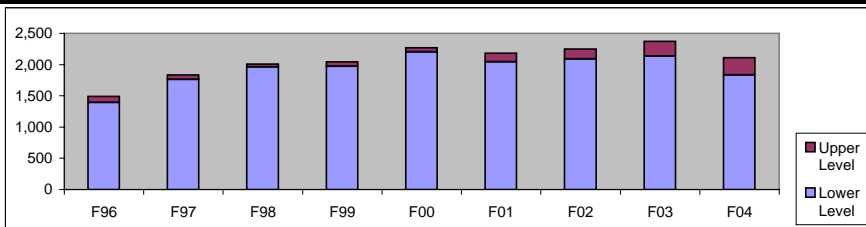
Degrees Conferred in Major:



Student Credit Hours Produced

Course Discipline: **ECO**

	F96	F97	F98	F99	F00	F01	F02	F03	F04
Lower Level	1,395	1,761	1,962	1,974	2,205	2,046	2,091	2,136	1,833
Upper Level	96	75	45	72	63	135	156	236	279
Ugrad Total	1,491	1,836	2,007	2,046	2,268	2,181	2,247	2,372	2,112
Graduate	30	58	0	63	69	63	111	75	243
Total	1,521	1,894	2,007	2,109	2,337	2,244	2,358	2,447	2,355

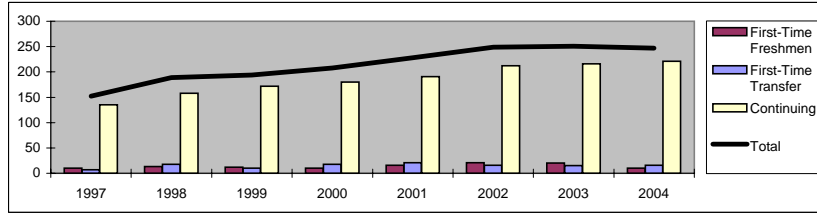


Program and Credit Hour Profile

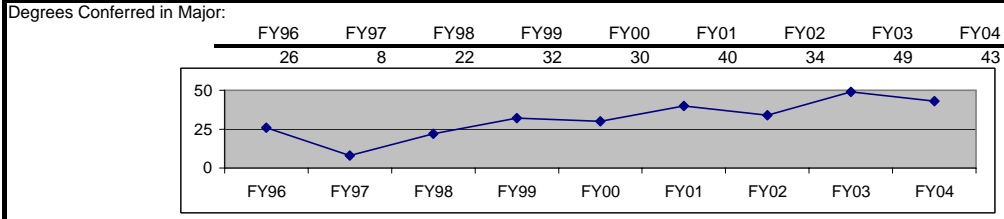
College: **Business**
 Department: **Finance**

Degree Program: **Finance** (CIP: 52.0801)

	Fall Semesters								
	1996	1997	1998	1999	2000	2001	2002	2003	2004
First-Time Freshmen	4	10	13	12	10	16	21	20	10
First-Time Transfer	9	7	18	10	18	21	16	15	16
Continuing	99	135	158	172	180	191	212	216	221
Total	112	152	189	194	208	228	249	251	247

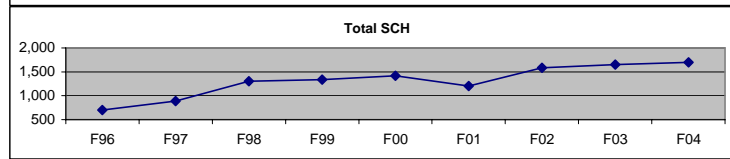
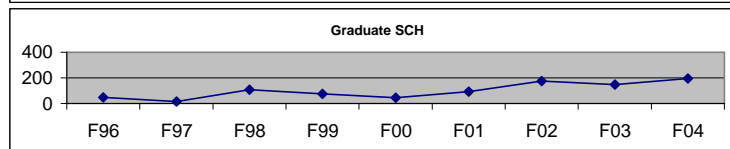
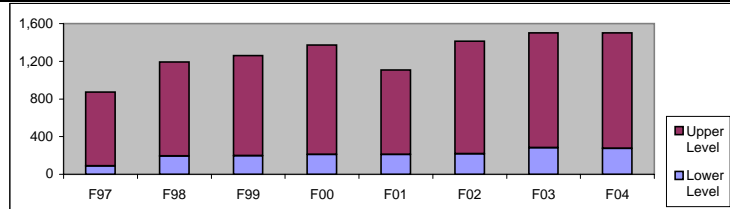


	F96-F97	F97-F98	F98-F99	F99-F00	F00-F01	F01-F02	F02-F03	F03-F04
In Major	4	6	10	9	8	8	13	16
	100%	60%	77%	75%	80%	50%	62%	80%
Changed Major	0	0	1	2	0	1	0	0
	0%	0%	8%	17%	0%	6%	0%	0%
Total retained in Univ.	4	6	11	11	8	9	13	16
	100%	60%	85%	92%	80%	56%	62%	80%



Student Credit Hours Produced
 Course Discipline: **FIN**

	F96	F97	F98	F99	F00	F01	F02	F03	F04
Lower Level	0	90	195	198	210	210	219	282	276
Upper Level	654	783	999	1,062	1,164	897	1,194	1,221	1,224
Ugrad Total	654	873	1,194	1,260	1,374	1,107	1,413	1,503	1,500
Graduate	48	15	108	75	45	93	174	147	196
Total	702	888	1,302	1,335	1,419	1,200	1,587	1,650	1,696

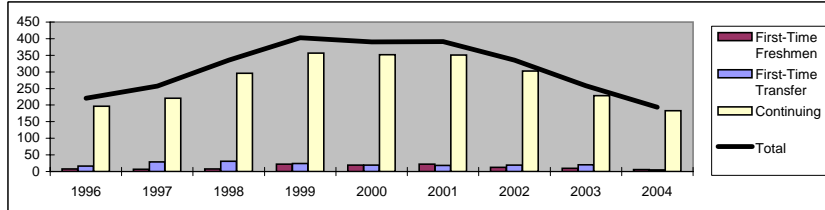


Program and Credit Hour Profile

College: **Business**
 Department: **Information Systems**

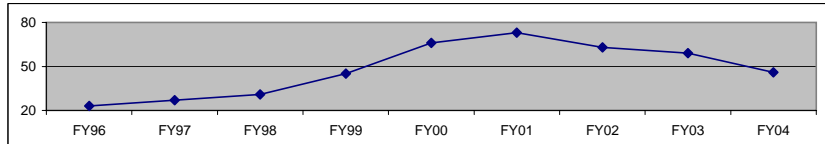
Degree Program: **Information Systems (CIP: 52.1201)**

	Fall Semesters								
	1996	1997	1998	1999	2000	2001	2002	2003	2004
First-Time Freshmen	8	7	8	22	19	22	13	10	6
First-Time Transfer	16	29	31	24	19	18	19	20	5
Continuing	197	221	296	357	352	351	303	228	183
Total	221	257	335	403	390	391	335	258	194



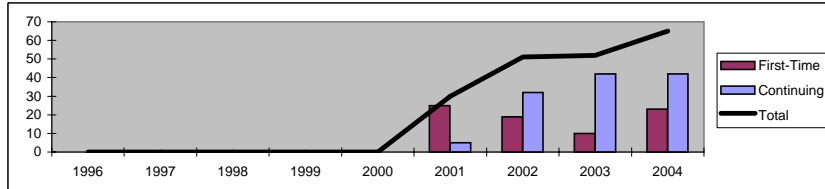
	F96-F97	F97-F97	F98-F99	F99-F00	F00-F01	F01-F02	F02-F03	F03-F04
	In Major	6 75%	6 86%	6 75%	17 77%	10 53%	14 64%	7 54%
Changed Major	2 25%	0 0%	1 13%	2 9%	2 11%	0 0%	1 8%	0 0%
Total retained in Univ.	8 100%	6 86%	7 88%	19 86%	12 63%	14 64%	8 62%	7 70%

Degrees Conferred in Major:	FY96	FY97	FY98	FY99	FY00	FY01	FY02	FY03	FY04
	23	27	31	45	66	73	63	59	46



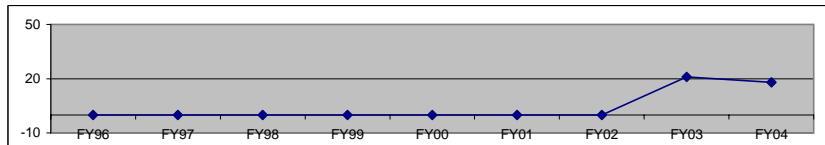
Degree Program: **Information Systems, Master's (New 2001) (CIP: 52.1201)**

	Fall Semesters								
	1996	1997	1998	1999	2000	2001	2002	2003	2004
First-Time	0	0	0	0	0	25	19	10	23
Continuing	0	0	0	0	0	5	32	42	42
Total	0	0	0	0	0	30	51	52	65



	F96-F97	F97-F97	F98-F99	F99-F00	F00-F01	F01-F02	F02-F03	F03-F04
	In Major	0 0%	0 0%	0 0%	0 0%	0 0%	9 0%	15 79%
Changed Major	0 0%	0 0%	0 0%	0 0%	0 0%	2 0%	0 0%	0 0%
Total retained in Univ.	0 0%	0 0%	0 0%	0 0%	0 0%	11 1%	15 79%	7 70%

Degrees Conferred in Major:	FY96	FY97	FY98	FY99	FY00	FY01	FY02	FY03	FY04
	0	0	0	0	0	0	0	21	18

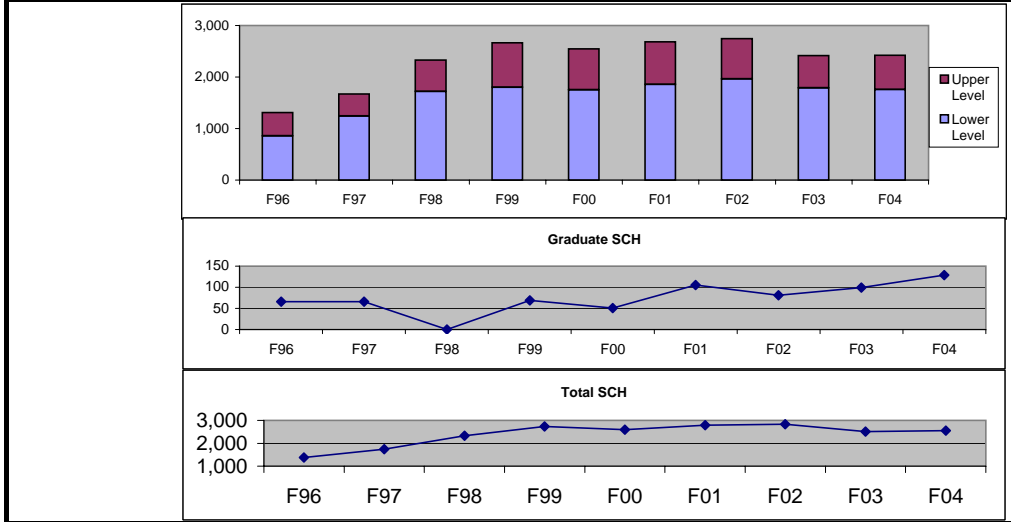


Program and Credit Hour Profile

College: **Business**
 Department: **Information Systems**

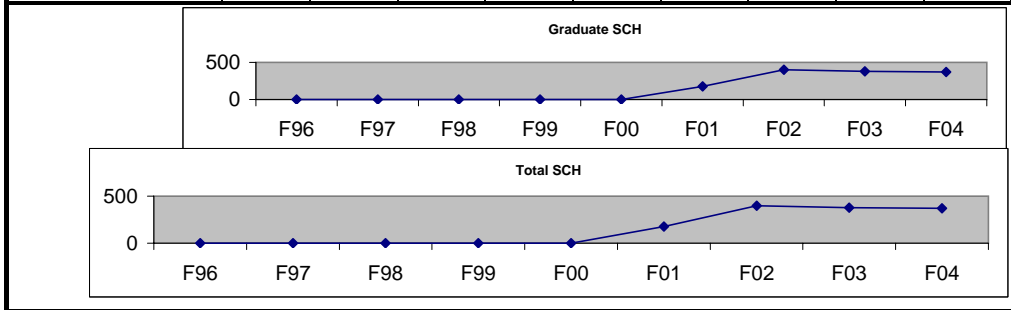
Student Credit Hours Produced
 Course Discipline: **IFS**

	F96	F97	F98	F99	F00	F01	F02	F03	F04
Lower Level	858	1,245	1,719	1,800	1,749	1,857	1,962	1,791	1,758
Upper Level	450	426	609	864	798	825	786	624	666
Ugrad Total	1,308	1,671	2,328	2,664	2,547	2,682	2,748	2,415	2,424
Graduate	66	66	0	69	51	105	81	99	129
Total	1,374	1,737	2,328	2,733	2,598	2,787	2,829	2,514	2,553



Course Discipline: **MSIS**

	F96	F97	F98	F99	F00	F01	F02	F03	F04
Lower Level	0	0	0	0	0	0	0		
Upper Level	0	0	0	0	0	0	0		
Ugrad Total	0	0	0	0	0	0	0	0	0
Graduate	0	0	0	0	0	177	399	378	372
Total	0	0	0	0	0	177	399	378	372

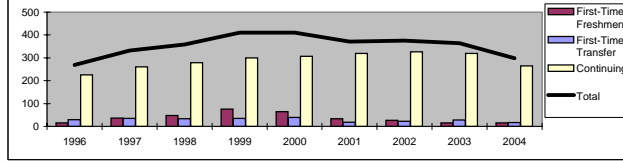


Program and Credit Hour Profile

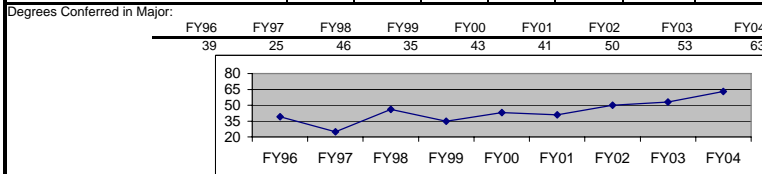
College: **Business**
 Department: **Management & Marketing**

Degree Program: **Management** (CIP: 52.0201)

	Fall Semesters								
	1996	1997	1998	1999	2000	2001	2002	2003	2004
First-Time Freshmen	15	36	47	75	65	34	26	16	16
First-Time Transfer	29	35	33	35	39	18	23	28	17
Continuing	225	261	279	300	307	319	327	320	265
Total	269	332	359	410	411	371	376	364	298

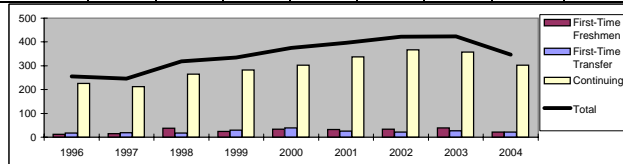


First Freshmen Retention to Second Year		F96-F97	F97-F98	F98-F99	F99-F00	F00-F01	F01-F02	F02-F03	F03-F04
In Major		7	24	26	34	25		11	5
		47%	67%	59%	45%	38%	0%	42%	31%
Changed Major		2	1	6	17	12		6	3
		13%	3%	13%	23%	18%	0%	23%	19%
Total retained in Univ.		9	25	32	51	37		17	8
		60%	69%	68%	68%	57%	0%	65%	50%

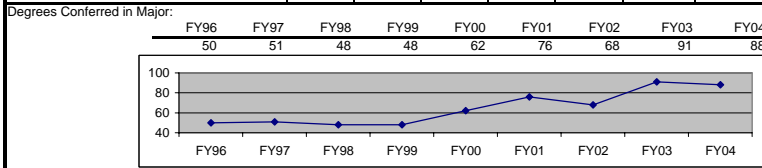


Degree Program: **Marketing** (CIP: 52.1401)

	Fall Semesters								
	1996	1997	1998	1999	2000	2001	2002	2003	2004
First-Time Freshmen	12	15	37	24	34	32	33	39	22
First-Time Transfer	17	19	17	29	39	26	22	27	22
Continuing	226	212	265	282	302	338	367	357	303
Total	255	246	319	335	375	396	422	423	347



First Freshmen Retention to Second Year		F96-F97	F97-F98	F98-F99	F99-F00	F00-F01	F01-F02	F02-F03	F03-F04
In Major		5	9	19	13	25	22	21	26
		42%	60%	51%	54%	74%	69%	64%	67%
Changed Major		1	4	4	4	3	1	3	1
		8%	27%	11%	17%	9%	3%	9%	3%
Total retained in Univ.		6	13	23	17	28	23	24	27
		50%	87%	62%	71%	82%	72%	73%	69%

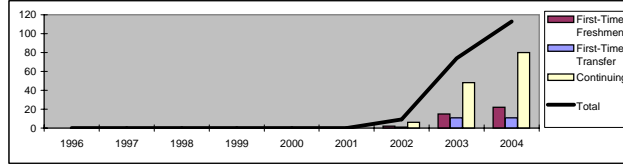


Program and Credit Hour Profile

College: **Business**
 Department: **Management & Marketing**

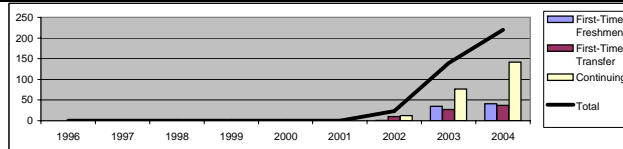
Degree Program: **Sports/Fitness MGT (new FA-02)** (CIP: 31.0504)

	Fall Semesters								
	1996	1997	1998	1999	2000	2001	2002	2003	2004
First-Time Freshmen							2	15	22
First-Time Transfer							1	11	11
Continuing							6	48	80
Total	0	0	0	0	0	0	9	74	113



Degree Program: **Business, General (Bachelors)** (New FA02) (CIP:52.0101)

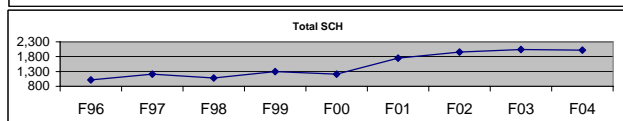
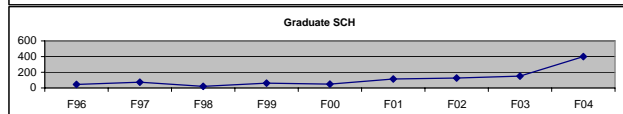
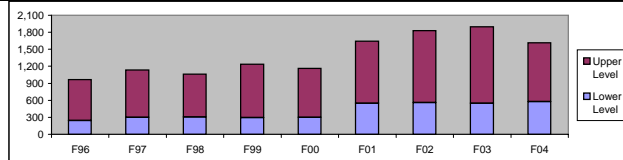
	Fall Semesters								
	1996	1997	1998	1999	2000	2001	2002	2003	2004
First-Time Freshmen							1	35	41
First-Time Transfer							10	27	37
Continuing							12	77	142
Total	0	0	0	0	0	0	23	139	220



Student Credit Hours Produced

Course Discipline: **MGT**

	F96	F97	F98	F99	F00	F01	F02	F03	F04
Lower Level	243	300	303	294	297	549	558	546	573
Upper Level	723	834	756	942	867	1,092	1,272	1,350	1,044
Ugrad Total	966	1,134	1,059	1,236	1,164	1,641	1,830	1,896	1,617
Graduate	45	75	21	63	51	114	126	150	402
Total	1,011	1,209	1,080	1,299	1,215	1,755	1,956	2,046	2,019

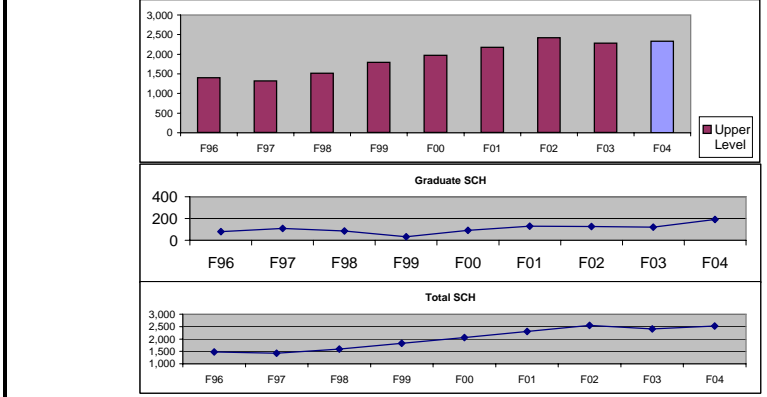


Program and Credit Hour Profile

College: **Business**
 Department: **Management & Marketing**

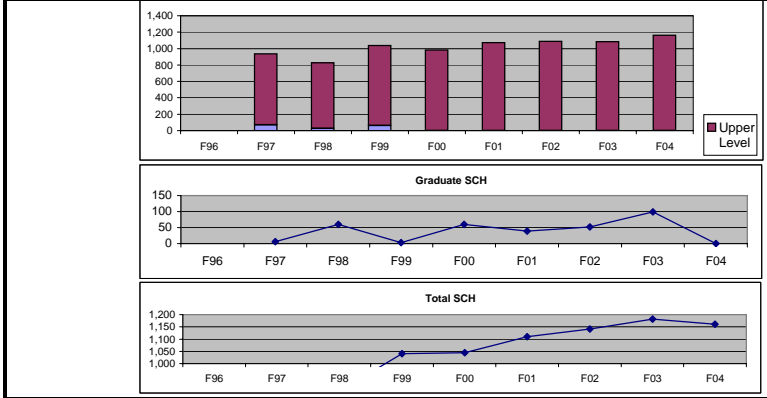
Course Discipline: **MKT**

	F96	F97	F98	F99	F00	F01	F02	F03	F04
Lower Level	0	0	0	0	0	0	0	0	2,328
Upper Level	1,404	1,317	1,515	1,797	1,974	2,175	2,418	2,283	0
Ugrad Total	1,404	1,317	1,515	1,797	1,974	2,175	2,418	2,283	2,328
Graduate	78	108	84	33	90	129	126	120	192
Total	1,482	1,425	1,599	1,830	2,064	2,304	2,544	2,403	2,520



Course Discipline: **BAD**

	F96	F97	F98	F99	F00	F01	F02	F03	F04
Lower Level	0	69	27	63	0	0	0	0	0
Upper Level	867	801	975	975	984	1,071	1,089	1,083	1,161
Ugrad Total	0	936	828	1,038	984	1,071	1,089	1,083	1,161
Graduate	0	6	60	3	60	39	52	99	0
Total	0	942	888	1,041	1,044	1,110	1,141	1,182	1,161



Course Discipline: **SPB (Sports Business)**

	F96	F97	F98	F99	F00	F01	F02	F03	F04
Lower Level									0
Upper Level								213	285
Ugrad Total	0	0	0	0	0	0	0	213	285
Graduate									0
Total	0	0	0	0	0	0	0	213	285

