

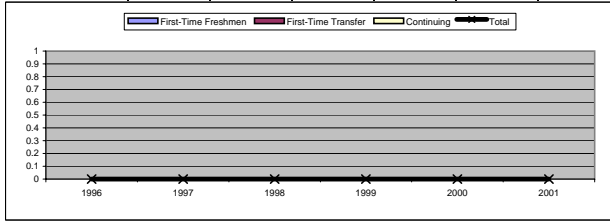
## User's Guide to the Tables in This Report

### Program and Credit Hour Profile

**College:**  
**Department:**

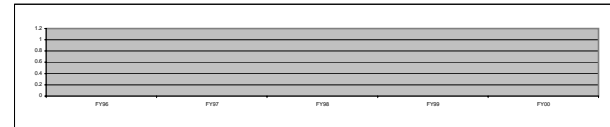
**Degree Program:**

	Fall Semesters						
	1996	1997	1998	1999	2000	2001	2002
First-Time Freshmen							
First-Time Transfer							
Continuing							
<b>Total</b>	<b>0</b>	<b>0</b>	<b>0</b>	<b>0</b>	<b>0</b>	<b>0</b>	<b>0</b>



	F96-F97	F97-F98	F98-F99	F99-F00	F00-F01	F01-F02
	In Major	#DIV/0!	#DIV/0!	#DIV/0!	#DIV/0!	#DIV/0!
Changed Major	#DIV/0!	#DIV/0!	#DIV/0!	#DIV/0!	#DIV/0!	#DIV/0!
Total retained in Univ.	0	0	0	0	0	0
	#DIV/0!	#DIV/0!	#DIV/0!	#DIV/0!	#DIV/0!	#DIV/0!

	FY96	FY97	FY98	FY99	FY00	FY01	FY02
	Degrees Conferred in Major:						



Navigation guide to the tables in this report.

**Purpose:** To provide tabled data & graphic summary of a department's academic program and credit hour activity for several years. For the College of Education data are consolidated to the college level.

**Program:** Program name and CIP code used for state reporting. Classification of Instructional Program (CIP) codes are a federal taxonomy of academic programs.

First-time Freshmen entering the program in Fall semester.  
First-time transfer entering program at freshmen through senior level.  
Continuing- all students whose NKU enrollment continues.  
Pre-majors are counted in the program.

Freshmen retention: From the freshman count of prior fall, the number still enrolled in the program and the number who changed to another major.

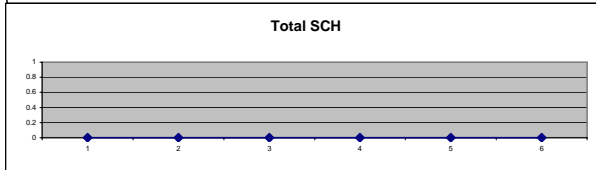
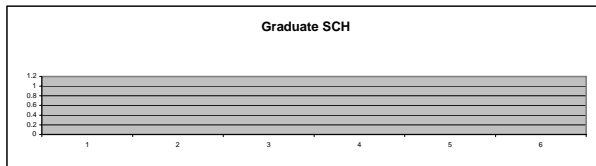
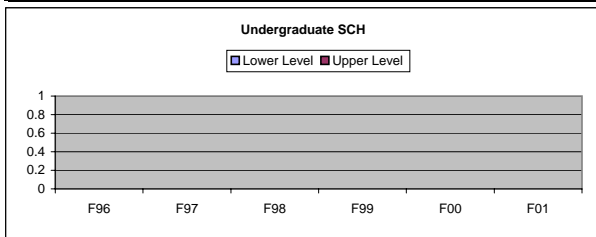
Degrees conferred on the August, December, May cycle

These tables repeat for each degree program in the department

### Student Credit Hours Produced

**Course Discipline:**

	F96	F97	F98	F99	F00	F01	F02
Lower Level							
Upper Level							
Ugrad Total	0	0	0	0	0	0	0
Graduate							
<b>Total</b>	<b>0</b>	<b>0</b>	<b>0</b>	<b>0</b>	<b>0</b>	<b>0</b>	<b>0</b>



Tabulated and graphic summary of credit hours produced in the Fall semester by students enrolled in the specified course discipline. There is a table for each course discipline taught by a department

The data in this report should match data that appear in the "Management Information Reports" fact book. This report is produced using a template. Therefore, not all tables or graphs may have data presented.

In the lower right footer is a page count for the number of pages in an individual department's report.

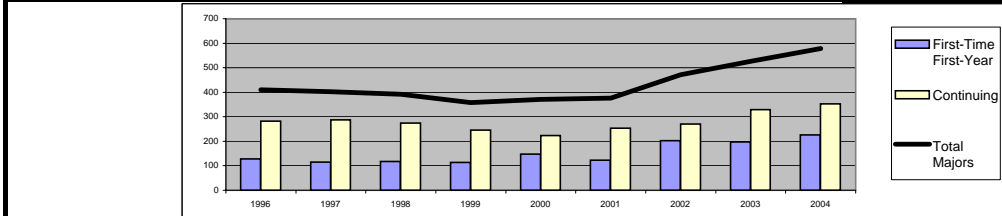
# Program and Credit Hour Profile

College: **Chase College of Law**

Department: **Legal Programs**

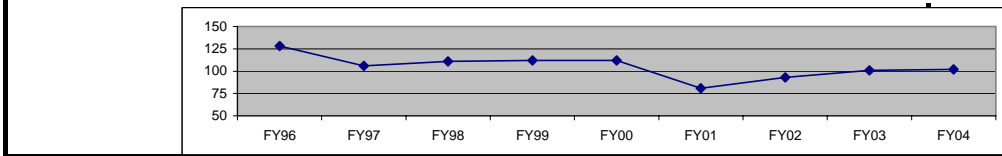
Degree Program: **Law** (CIP: 22.0101)

	Fall Semesters								
	1996	1997	1998	1999	2000	2001	2002	2003	2004
First-Time First-Year	128	115	118	113	148	123	202	197	226
Continuing	282	287	274	245	223	253	270	329	352
<b>Total Majors</b>	<b>410</b>	<b>402</b>	<b>392</b>	<b>358</b>	<b>371</b>	<b>376</b>	<b>472</b>	<b>526</b>	<b>578</b>



	F96-F97	F97-F98	F98-F99	F99-F00	F00-F01	F01-F02	F02-F03	F03-F04
In Major	110	98	94	82	115	108	170	150
Changed Major	86%	85%	80%	73%	78%	88%	84%	76%
Total retained in Univ.	110	98	94	82	115	108	171	150
	86%	85%	80%	73%	78%	88%	85%	76%

	FY96	FY97	FY98	FY99	FY00	FY01	FY02	FY03	FY04
Degrees Conferred in Major:	128	106	111	112	112	81	93	101	102



## Student Credit Hours Produced

Course Discipline: **LAW**

	F96	F97	F98	F99	F00	F01	F02	F03	F04
First Professional	4,933	4,786	4,782	4,311	4,561	4,629	5,722	6,509	7,019
Total	4,933	4,786	4,782	4,311	4,561	4,629	5,722	6,509	7,019

